



# GO EXPLORING WITH THE BEST ICE TEAM ON EARTH



Ice Season 2009-10



Be there as the pages and footage of NATIONAL GEOGRAPHIC spring to life. Experience the ice the way only the best ice team on earth can reveal it. No mere drive-by, our polar expeditions go deeper. Captained by Ice Masters, guided by the most experienced expedition leaders working today and accompanied by National Geographic experts, we'll safely take you where few have gone, to see for yourself what few have seen. For over forty years we've had the privilege of introducing adventurous guests to the world within the ice. We hope you'll be inspired to join us this year.



**Why just read about the Arctic and Antarctica or watch it on TV? Come, experience it LIVE**



**The ice is nature's art, the eternal landscape of the romantic mind**

There are any number of reasons why you might want to head into the ice this season. The beauty. The purity of the light and air. The epic quality of the silence. You may want to see the sculptural forms and slow waltz of the bergs,

drifting in their personal pools of Caribbean-blue meltwater. You may want to revel in Antarctica's remoteness, its spirit-soaring spaciousness; see its mountains rising 3,000, 4,000, 9,000 feet straight up from the sea. Or celebrate the midnight sun in the island and fjord-studded Arctic, with its massive, thunderously calving glaciers. **You may want to visit the teeming penguin colonies; or stand on the deck of our ship and watch a polar bear,** the consummate symbol of wild freedom, roam the pack ice. Or simply, to be astounded by the sheer diversity and density of life thriving inside the ice. Join us on a polar expedition, and chances are, you'll get into a conversation about the importance of the ice regions to our planet. That conversation will definitely be interesting – perhaps even the main reason to head into the ice with us, since **our ice-seasoned naturalists and the National Geographic expert onboard will contribute greatly to your understanding.** The climate crisis is one of the key



issues of our time. Go into the ice to see for yourself and **you'll return more informed, a part of the planet-wide discussion and perhaps a part of the solution, too.** We can predict this with

some certainty because the ice contains a potent antidote to the current threat – hope. You'll see haunting reminders of the whaling industry in both the Arctic and Antarctica. And you'll see whales – thriving in the nutrient-rich northern and southern oceans. We've regularly observed humpbacks, belugas, sperm whales, orcas and other species on our expeditions, and our National Geographic experts confirm the exuberant population rebound. Come to the Falklands with us and you'll see thousands of fur seals, hunted to near extinction mere decades ago, burgeoning among the black-browed albatrosses and macaroni penguins. **You'll see that decisive action can reverse even the worst situations.** Exploring the ice will inspire you as it reminds you how much pristine Nature matters.

*On July 11, 2008, over 100 leaders from science, business, policy, religion, labor and the environment met at the Arctic Expedition for Climate Action hosted by Lindblad Expeditions, National Geographic and the Aspen Institute. Find out more on page 50.*



## The iconic creatures of the ice





**The ice is the wild blue yonder we can go into and discover life**



Modern day exploration. That's probably the best way to describe our expedition style. It has the same romantic impulse for adventure and discovery as any historic polar expedition, but a thoroughly modern interest in safety,

comfort and cool tools. State-of-the-art, hand-somely re-fitted, our new ship *National Geographic Explorer* is designed to navigate polar conditions. Its name reflects the deepening relationship between our two companies — honoring the National Geographic Society's century-plus of exploration; and the name of the *Lindblad Explorer*, the first purpose-built expedition ship, commissioned in 1969 by Lars-Eric Lindblad, known by many as the 'father of eco-tourism.' Spacious yet nimble, it will bring you in close for the kind of immediate, thrilling encounters no cruise ship can match. Equipped with 21st-century expedition tools,

including an ROV (Remotely Operated Vehicle) and an ice-certified diver to bring back Cousteau-like footage for you to enjoy in the ship's Lounge. It also enables you to have a personal, private, polar expedition — kayaking in the ice. Renowned for their organizational ability, our ice team will smoothly get you "out there" for daily adventures.

Vivid video footage is a hallmark of Lindblad & National Geographic expeditions. Visit [expeditions.com/ice](http://expeditions.com/ice) to see DVD chronicles shot on our expeditions.



Top left: Arctic-born National Geographic photographer, Paul Nicklen, enjoys a genial interaction with a leopard seal. Paul will be on board several of our 2009 Antarctic expeditions.

WEATHER REPORT: In Antarctica in austral summer, Nov. to Mar., conditions are similar to Northeast U.S. winters: temps generally in the 30s and 40s F; either clear and sunny or overcast, maybe snowing. In the Arctic from July to Aug., temps range from the 20s to even 60s, most often in the 30s and 40s.

Ship's Registry: Bahamas



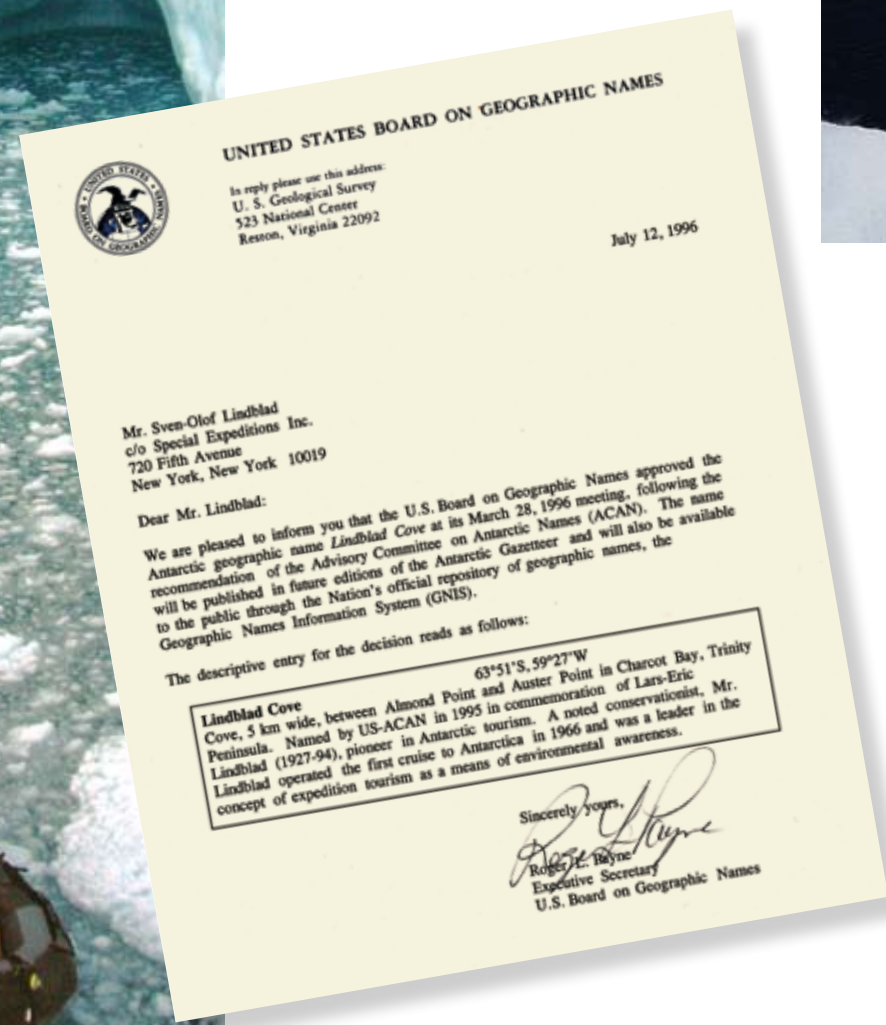
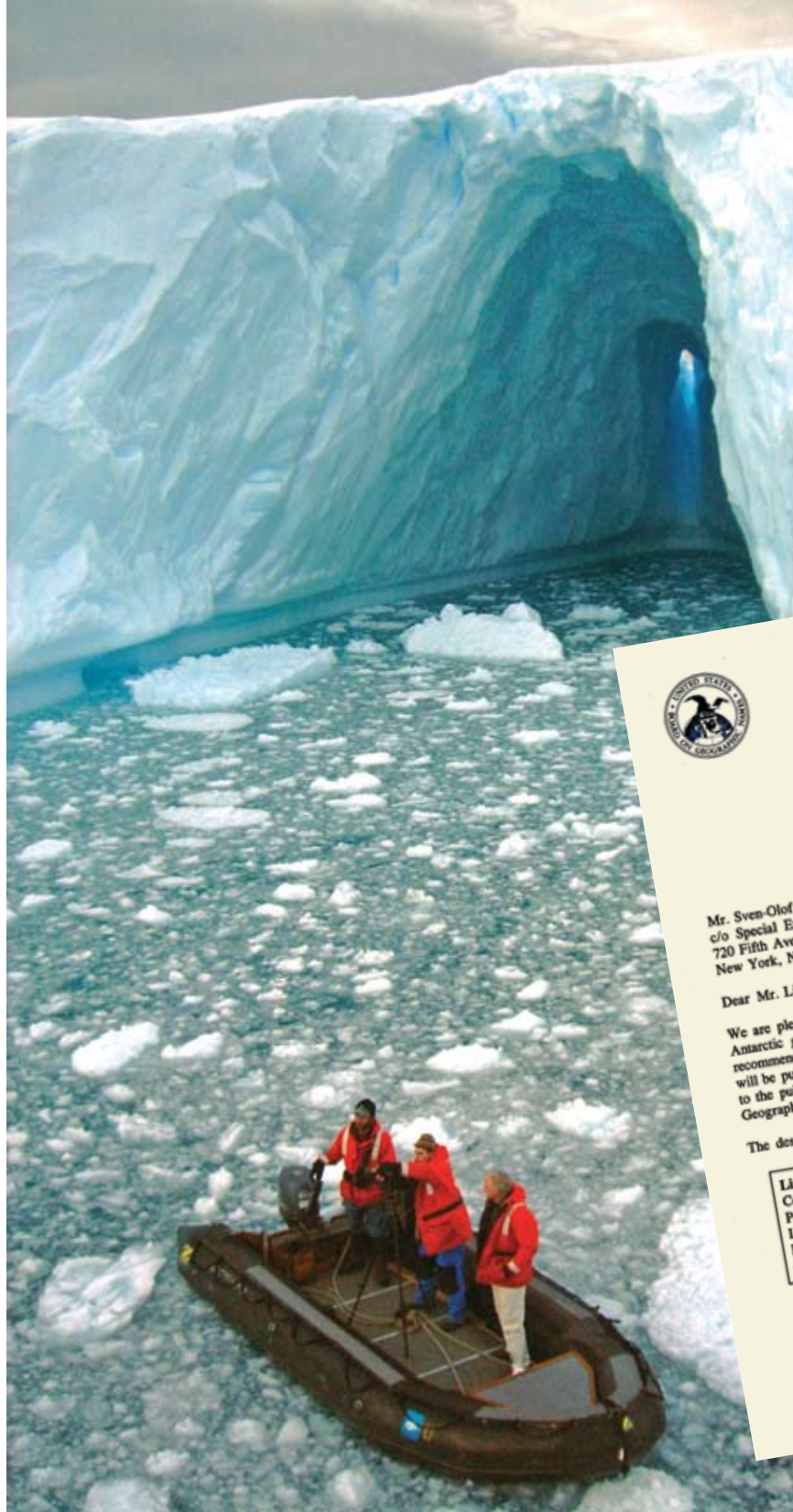
# ANTARCTICA



Astronauts have written that seen from space, the most distinctive feature of our world is the ice sheet of Antarctica, which 'radiates light like a great white lantern across the bottom of the world.'

Ian Cameron  
*Antarctica, The Last Continent*





Exploring Antarctica is one of the most exhilarating adventures on the planet. It requires traveling enormous distances and the time to do it right. And your friends

and family might look incredulous when you announce your intentions. Despite all that, it could be the best decision you'll ever make. Especially if you explore it with us. And we don't say that flippantly — it's about safety, as well as the quality of the experience you'll have. The conditions of ice and weather in Antarctica are challenging, making travel there a highly specialized endeavor requiring knowledge and leadership. It is not enough for, say, a cruise line to decide that Antarctica is trending, get out the maps and go there. Assuring your safety takes experience, which we've earned in over 40 years of leading expeditions there, and actually mapping some regions of the coast. Insuring the quality of your experience takes experience — and more. Our Ice Masters have a keen sense of adventure, a deep and abiding love of Nature and a vast curiosity about the ice landscape, as you'll see when you join us. We have an open Bridge, so when you find your way there, you'll be warmly welcomed.



Captain Leif Skog has been a Lindblad Ice Master since 1997. His experience in polar waters runs deep. He's navigated vessels in Antarctica nearly every season since 1979 on more than 100 voyages. As Chairman of the IAATO Marine Committee (International Assn. of Antarctic Tour Operators), he was a primary architect of the IAATO Emergency Contingency Plan for all vessels operating in Antarctica.



Lars-Eric Lindblad pioneered Antarctic tourism. In 1966 Lindblad Travel, under his leadership, launched the first layman's expedition to the continent, at a time when explorers and scientists were the only visitors to this vast wilderness.



**The ice shows its true colors under the glowing midnight sun of austral summer**

More escapist than any beach vacation, Antarctica is a blissful getaway from the human race. Ironically, it's also where humans have shown their capacity to work together in harmony, for the general, global good. This Utopian state

of affairs is due in large part to the International Polar Year (IPY), a global sharing of scientific findings that has given the world's scientists a series of snapshots of the state of the polar regions. Much of what we know about the environment and global warming comes from the "brotherhood of science" behind the IPY established in 1882-83; with a second in 1932-33; and a third in 1957-58. The most recent IPY involved 80,000 scientists from 67 countries including, at the time, Cold War nations. The current IPY, which actually runs from March 2007 to March 2009 to allow researchers to work in both polar regions or to work summer and winter, promises to be the most important IPY to date. The story of Antarctica has always been a noble one – high-minded explorers pitting themselves against the continent, not for commercial exploitation or for empire, but to know. And this noble spirit continues today through the genuinely



international rapport among the scientists working there. Another reason why Antarctica is a beacon of hope. Our partnership with National Geographic is conceived in a similar spirit of cooperation. It's philosophical.

We care about the same things: exploration, discovery, conservation, and inspiring people to care about the planet. And it's pragmatic. We provide logistical support, using our ice ships to bring National Geographic authors, explorers, photographers and research scientists into the field. In addition, our expeditions are renowned for the quality of our field expertise: the marine mammal experts, geologists, birders, historians, undersea specialists and expedition leaders who travel with you, sharing insights and adding to your knowledge as we explore the nooks and crannies of the ice – an environment seemingly stripped to essentials yet complex and wondrous. Travel with us and you too enter the "lab" of Antarctica and participate in learning, an integral part of our ice adventures.



The Ends of the Earth: An Anthology of The Finest Writing on The Arctic and The Antarctic is a terrific book, conceived to commemorate the current International Polar Year (IPY) and remind us what we're in danger of losing. Book a polar expedition with us before the end of the IPY, March 31st, 2009, and we'll send you a copy with our compliments.



The ice inspires a sense of wonder





Diamond-like in its pure beauty, Antarctica has many facets. The following 3 itineraries let you experience the region's best: Antarctica, Antarctica plus South Georgia and the Falklands – and our new adventure from Cape Horn to the Cape of Good Hope.

Above: Close encounter with a humpback whale. Right, clockwise from top: King penguins, newborn elephant seal pups, Rockhopper penguin, Wandering albatross courting pair, chin-strap penguin.



# Antarctica

## 15 DAYS/12 NIGHTS — NATIONAL GEOGRAPHIC EXPLORER

DEPARTURES: 2008 Nov. 28; Dec. 9 2009 Jan. 10; Nov. 4; Dec. 16, 27 2010 Jan. 7, 18, 29

PRICES FROM: \$10,250 to \$19,870 (See pages 44-45 for complete prices.)

Departures in red are sold out. Book departures in blue for complimentary R/T economy group airfare Miami/Santiago.



Photos left to right: Adelle penguins; majestic iceberg at sunset; Zodiacs get you close to all the action.

### EXPEDITION HIGHLIGHTS

- ▶ SPEND AT LEAST SIX DAYS EXPLORING ANTARCTICA ABOARD OUR ICE-STRENGTHENED SHIP.
- ▶ WITH 40+ YEARS OF EXPERIENCE IN ANTARCTICA, WE DELIVER AN UNPARALLELED EXPEDITION.
- ▶ KAYAK IN PROTECTED WATERS, PADDLING AROUND ICEBERGS AS PENGUINS SWIM NEARBY.

### Explore With The Best Ice Team On Earth.

**CAPTAIN:** Ice Master Leif Skog (right) has navigated over 100 Antarctic voyages.

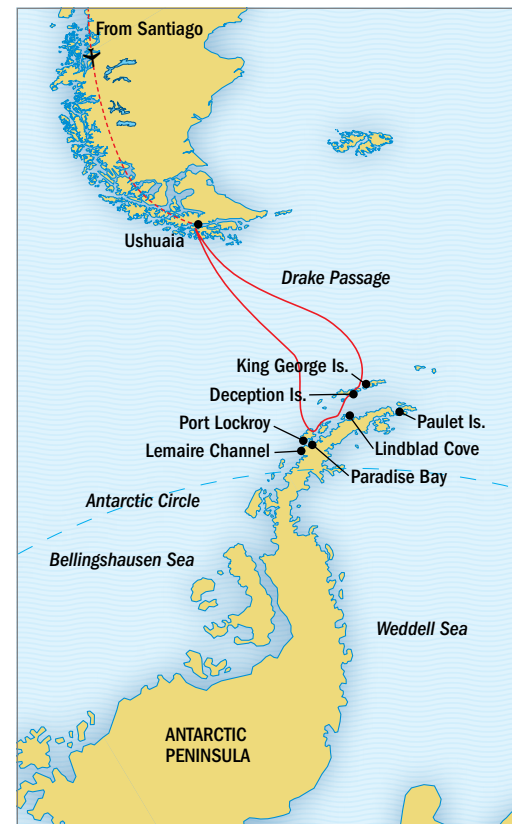
**EXPEDITION LEADER:** Matt Drennan has made over 75 voyages to the southern continent, and his passion for the wildlife, scenery and history continues to grow.

**NATURALIST:** John Fonseca is one of the few people to ever have overwintered at the South Pole.

**UNDERSEA SPECIALIST:** Lisa Trotter (left), author of *Below Freezing* and Antarctic veteran, is the first person to receive their dive certification in the Antarctic.

**NATIONAL GEOGRAPHIC SPECIALISTS:** Travel with Adventurer Jon Bowermaster, who kayaked the seven continents plus Oceania; National Geographic Photographers Flip Nicklin; Michael Melford; Sisse Brimberg; Jay Dickman and more.

*Expedition staff varies by voyage date. Check our web site for full bios of experts on your selected departure.*



the afternoon, join a panoramic exploration of the city. (L,D)

### DAY 3: SANTIAGO/USHUAIA, ARGENTINA/EMBARK

The morning's LAN charter flight offers rare views of Patagonia before landing in Ushuaia, the southernmost city in the world. Have lunch during a catamaran cruise of the scenic Beagle Channel before embarking. (B,L,D)

Glide around enormous tabular icebergs by Zodiac, walk along beaches covered with thousands of penguins, and kayak amid abundant wildlife. Learn about the Lindblad legacy, dating from 1966, as you travel with Ice Masters and Expedition Leaders who have hundreds of journeys under their parkas. On every expedition, two penguin researchers, supported by our joint fund with National Geographic, are on board, and they invite you to participate in penguin

studies. An Undersea Specialist captures rarely seen footage of life beneath the icy surface. You can view these fascinating findings in the comfort of the ship's lounge.

### DAYS 1-2: U.S./FLY OVERNIGHT TO SANTIAGO, CHILE

Depart Miami on an overnight flight to Santiago. Arrive in Santiago this morning. Proceed to our gracious hotel, the Grand Hyatt Santiago (or similar). In

### DAY 4: AT SEA

Awake this morning well into our journey across the Drake Passage. Lying between Cape Horn and the Antarctic Peninsula, the Drake holds a distinct place in maritime lore. Sometimes misty and gray, other times calm and clear, crossing the legendary Drake Passage is unforgettable. (B,L,D)

### DAY 5: ANTARCTICA

First landfall is on one of the many islands of the Antarctic Peninsula region, taking hikes and Zodiac forays with our Naturalists. (B,L,D)

### DAYS 6-11: ANTARCTICA

With nearly 24 hours of daylight at this time of year, we make the most of our six days exploring the Antarctic Peninsula and its surrounding islands. The schedule is flexible to give you the best experience possible. Our veteran expedition team and their expert knowledge of Antarctica's waters enable us to take advantage of the unexpected. We are out daily — experiencing Antarctica with all our senses as we walk, cruise in Zodiacs, and venture out in kayaks. See seals wallowing on the beach; hear the cries of penguins, and the huge, nurturing silence of this pristine place.

We may sail through the

incomparable Lemaire Channel, where a hush falls over onlookers as bergs of beauty and scale drift by. Identify penguins, paddle kayaks through berg fields, and land with Zodiacs on the "White Continent." (B,L,D)

### DAY 12: ANTARCTICA/AT SEA

Depending on conditions, we may make one last landfall before heading back across the Drake Passage. (B,L,D)

### DAY 13: AT SEA

There is time for a massage, a workout in the gym, or to catch up on some reading. (B,L,D)

### DAY 14: USHUAIA/DISEMBARK/SANTIAGO

Disembark in Ushuaia with time to explore before proceeding to the airport for our LAN charter flight to Santiago. Fly on an overnight flight to the U.S. (B,L)

### DAY 15: ARRIVE HOME

### Optional Extensions

See pages 28-29 for optional extensions to Easter Island and Peru.


EXPLORE MORE ON THE WEB AT [WWW.EXPEDITIONS.COM/ANTARCTICA](http://WWW.EXPEDITIONS.COM/ANTARCTICA) AND SELECT THIS ITINERARY.



Frequent opportunities to kayak provide up-close and one-of-a-kind experiences.

# Antarctica, South Georgia and the Falklands

25 DAYS/22 NIGHTS — NATIONAL GEOGRAPHIC EXPLORER

DEPARTURES: 2008 Dec. 20 2009 Jan. 21; Nov. 15 2010 Feb. 9  All departures are Photo Expeditions

PRICES FROM: \$17,590 to \$34,270 (See pages 44-45 for complete prices.)



Photos left to right: Our kayaks are safe and easy to maneuver; the ice is bliss for avid photographers.

## EXPEDITION HIGHLIGHTS

- ▶ 40+ YEARS OF ANTARCTIC EXPEDITIONS ASSURES YOU OF THE BEST POSSIBLE EXPERIENCE.
- ▶ ENCOUNTER AN ASTONISHING NUMBER OF KING PENGUINS ON SOUTH GEORGIA.
- ▶ FEW THINGS COMPARE TO KAYAKING AMONG THE ICESCAPES OF ANTARCTICA.

From the ice to the undersea, discover Antarctica with an experienced polar Expedition Team.



**UNDERSEA SPECIALIST:** Accomplished diver David Cothran (left) will share and interpret his videos and images of Antarctic marine life.

**EXPEDITION LEADER:** Tom Ritchie has worked with expedition travel almost since its inception with Lars-Eric Lindblad.

**NATIONAL GEOGRAPHIC SPECIALISTS:** Travel with Writer and Adventurer Jon Bowermaster; National Geographic Photographers Paul Nicklen (right); Flip Nicklin and more.



*Expedition staff varies by voyage date. Check our web site for full bios of experts on your selected departure.*

Decades of exploring the Antarctic region have given us the expertise needed to uncover important landing sites beyond the Antarctic Peninsula: the South Orkney Islands, the Falkland Islands and South Georgia, perhaps the ultimate destination for jaw-dropping scenery and boundless wildlife. Walk wild beaches with thousands of king penguins, take a rugged hike and kayak where few have gone before.

### DAYS 1-2: U.S./FLY OVERNIGHT TO SANTIAGO, CHILE

Arrive in Santiago, backed by the soaring Andes. Check into the

Grand Hyatt. After lunch join an overview of the city, including a visit to the Pre-Columbian Museum. (L,D)

### DAY 3: SANTIAGO/USHUAIA, ARGENTINA/EMBARK

The morning's LAN charter flight offers rare views of Patagonia before landing in Ushuaia. Join a catamaran cruise of the Beagle Channel. Embark ship. (B,L,D)

### DAYS 4 & 5: AT SEA/ANTARCTICA

Watch for whales and birds as you settle into shipboard life. On Day 5, land on one of the islands of the Antarctic Peninsula region. (B,L,D)

### DAYS 6-10: ANTARCTICA

With nearly 24 hours of daylight, we make the most of our five days exploring the Antarctic Peninsula and its surrounding islands. Our schedule is flexible to take advantage of the unexpected. Cruise in Zodiacs, paddle kayaks, observe penguins. We may sail through the incomparable Lemaire Channel and land on the "White Continent." (B,L,D)

### DAY 11: ELEPHANT ISLAND

We pass the speck of land that is the legendary Elephant Island, an unforgettable part of the Shackleton story, where the crew of *Endurance* finally landed on April 24, 1916. From here, Shackleton and five men set sail for one of the most incredible stories of survival at sea: 700 miles across the Southern Ocean in a 22'-long wooden sailboat. (B,L,D)

### DAY 12: AT SEA

Watch for icebergs as we sail. There is time for a massage, a workout in the gym, or to catch up on some reading. (B,L,D)

### DAY 13: SOUTH ORKNEY ISLAND

Mountainous and rugged, the

South Orkneys are never quite free of pack ice and icebergs. Every rocky site teems with penguins. Leopard seals can be seen and innumerable birds come here to nest and breed. (B,L,D)

### DAY 14: AT SEA (B,L,D)

### DAYS 15-18: SOUTH GEORGIA

Renowned for its beauty and vast colonies of king penguins, this is also the final resting place for Sir Ernest Shackleton. Teeming wildlife, breathtaking scenery and soaring cliffs greet us. Hundreds of young Antarctic

fur seals are on hand as our Zodiacs make landfall. At St. Andrew's Bay, you may come upon 100,000 king penguins! (B,L,D)

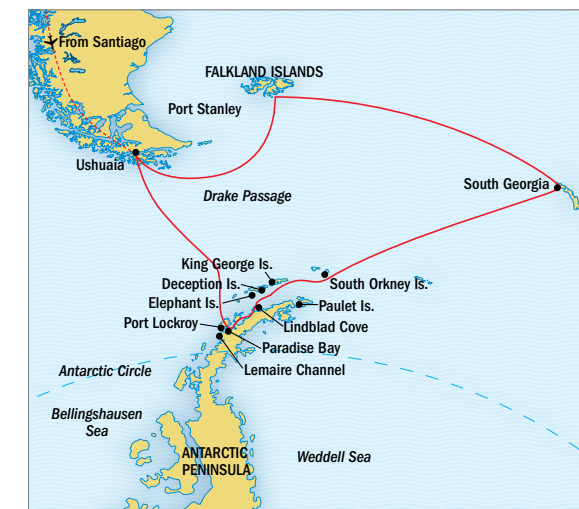
### DAYS 19-20: AT SEA (B,L,D)

### DAY 21: PORT STANLEY, FALKLANDS

See the photogenic tin-roofed, Victorian-style houses of Port Stanley. Visit the Anglican Cathedral with its archway of whalebones and the Falkland Islands Museum. (B,L,D)

### DAY 22: FALKLAND ISLANDS

The Falklands boast the largest



albatross colony in the world, irresistible Magellanic penguins in their burrows amid green tussock grass and herds of enormous elephant seals. (B,L,D)

### DAY 23: AT SEA (B,L,D)

### DAY 24: USHUAIA, ARGENTINA/ DISEMBARK/SANTIAGO

Disembark in Ushuaia. Board our chartered LAN flight to Santiago. Fly overnight to the U.S. (B,L)

### DAY 25: ARRIVE U.S./HOME

### Optional Extensions

See pages 28-29 for optional extensions to Easter Island and Peru.

EXPLORE MORE ON THE WEB AT [WWW.EXPEDITIONS.COM/ANTARCTICA](http://WWW.EXPEDITIONS.COM/ANTARCTICA) AND SELECT THIS ITINERARY.




Visiting the bustling penguin colonies of Antarctica is immersive & fun.



**NEW** **Cape Horn to the Cape of Good Hope: Via Antarctica, South Georgia, Tristan da Cunha & South Africa**

**28 DAYS/25 NIGHTS — NATIONAL GEOGRAPHIC EXPLORER**

DEPARTURE: 2009 Feb. 11  Photo Expedition

PRICES FROM: \$17,590 to \$32,640 (See pages 44-45 for complete prices.)

Book by Nov. 30 for complimentary airfare—a value of up to \$2,000 (Economy group flights Miami/Santiago, Cape Town/NY)



Photos left to right: Guests exploring by Zodiac in Antarctica; King penguins on South Georgia.

**EXPEDITION HIGHLIGHTS**

- ▶ ZODIAC, KAYAK AND EXPLORE ANTARCTICA WITH THE BEST ICE TEAM ON EARTH.
- ▶ SEE A VAST COLONY OF 100,000 KING PENGUINS IN SOUTH GEORGIA.
- ▶ VISIT ONE OF THE MOST ISOLATED ISLAND GROUPS IN THE WORLD, TRISTAN DA CUNHA.

**Go where few have gone guided by the knowledge and leadership of your Expedition Team.**

**EXPEDITION LEADER:** Tom Ritchie, (right) Naturalist extraordinaire, has worked with expedition travel almost since its inception with Lars-Eric Lindblad.



**NATURALIST:** Ecologist Dr. Steve MacLean is a specialist on the plants, birds and mammals of the polar climates.

**NATIONAL GEOGRAPHIC SPECIALIST:** Kent Kobersteen is the former National Geographic Director of Photography and has traveled to many of the places we'll visit.

**UNDERSEA SPECIALIST:** Kelvin Murray spent a year in Antarctica as Field Diving Officer for the British Antarctic Survey.

*Check our web site for full bios of experts on this voyage.*

Many colorful milestones line our route on this epic voyage from Cape Horn, at the tip of South America, to the Cape of Good Hope in South Africa. Explore the wildlife and icebergs of Antarctica and South Georgia, with its vast king penguin colonies. Visit Tristan da Cunha, an oceanic Eden, before ending in lively Cape Town. We always change course for wildlife sightings — Zodiacs, kayaks and an Undersea Specialist help us understand these remote lands.

**FEB. 11-12: U.S./FLY OVERNIGHT TO SANTIAGO, CHILE**

Arrive in Santiago, backed by the soaring Andes. Check into the Grand Hyatt. Join a guided view of the city, and visit the Pre-Columbian Museum. (L,D)

**FEB. 13: SANTIAGO/USHUAIA, ARGENTINA/EMBARK**

This morning's LAN charter flight offers rare views of Patagonia before landing in Ushuaia. Join a catamaran cruise of the Beagle Channel. Embark ship. (B,L,D)

**FEB. 14: AT SEA**

Watch for whales and birds as you settle into shipboard life. (B,L,D)

**FEB. 15-19: ANTARCTICA**

With nearly 24 hours of daylight, we make the most of our days exploring the Antarctic Peninsula and its surrounding islands. Our schedule is flexible to take advantage of the unexpected. Cruise in Zodiacs, paddle kayaks, observe penguins. We land on the "white continent" and sail through the incomparable Lemaire Channel. (B,L,D)

**FEB. 20: AT SEA/SOUTH ORKNEY ISLAND**

Mountainous and rugged, the South Orkneys are never quite free of ice. Giant icebergs litter the surrounding waters and every rocky beach teems with penguins. See leopard seals and nesting birds. (B,L,D)



An adult leopard seal resting among the icebergs, Antarctica.

**FEB. 21: AT SEA (B,L,D)**

**FEB. 22-25: SOUTH GEORGIA**

Renowned for its beauty and vast colonies of king penguins, this is also the final resting place for Sir Ernest Shackleton. Teeming wildlife, breathtaking scenery and soaring cliffs greet us. Hundreds of young Antarctic fur seals are on hand as our Zodiacs make landfall. At St. Andrew's Bay, you may come upon 100,000 king penguins! (B,L,D)

**FEB. 26-MAR. 1: SAIL THE SOUTHERN ATLANTIC**

With our bow pointed northeast towards the African continent, our days at sea are spent relaxing and hearing talks from our Naturalists to prepare us for the exciting days ahead. (B,L,D)

**MAR. 2-3: TRISTAN DA CUNHA/NIGHTINGALE ISLAND**

"Welcome to the Remotest Island" reads the sign at our landfall today. In the middle of the South Atlantic, Tristan is home to just over 300 hardy souls who make their living from the sea. We meet the islanders to learn firsthand about their culture and history. Nightingale Island is a wildlife haven, home to millions of breeding greater shearwaters, albatross and a unique race of rockhopper penguins. There's



time to hike with our Naturalists on this oceanic Eden. (B,L,D)

**MAR. 4-7: AT SEA**

Watch for marine life at the Bridge, take time for a massage, a workout in the gym, or to catch up on some reading. (B,L,D)

**MAR. 8: CAPE TOWN, SOUTH AFRICA/DISEMBARK/OVERNIGHT HOTEL**

Disembark and explore Cape Town, the premier city in South Africa, celebrated for its great seaside location and vistas. For a spectacular view of the Cape, take a cable car to the top of the city's landmark, flat-topped Table Mountain (weather permitting). Then visit Kirstenbosch Botanical Garden, known for its remarkable

collection of Cape flora. Check in to the Table Bay Hotel, on the Victoria & Alfred Waterfront, with the rest of the day free to explore. (B,L)

**MAR. 9-10: CAPE TOWN/FLY OVERNIGHT TO THE U.S./HOME (B)**

**Optional Extensions**

**Easter Island, Pre-voyage 4 Days (See page 28)**

**Cape Town, Post-voyage 2 Days**

**Cape Town & Sabi Sand Reserve, Post-voyage 5 Days**

**Please call for details.**

EXPLORE MORE ON THE WEB AT [WWW.EXPEDITIONS.COM/ANTARCTICA](http://WWW.EXPEDITIONS.COM/ANTARCTICA) AND SELECT THIS ITINERARY.



## Easter Island: Optional Extension

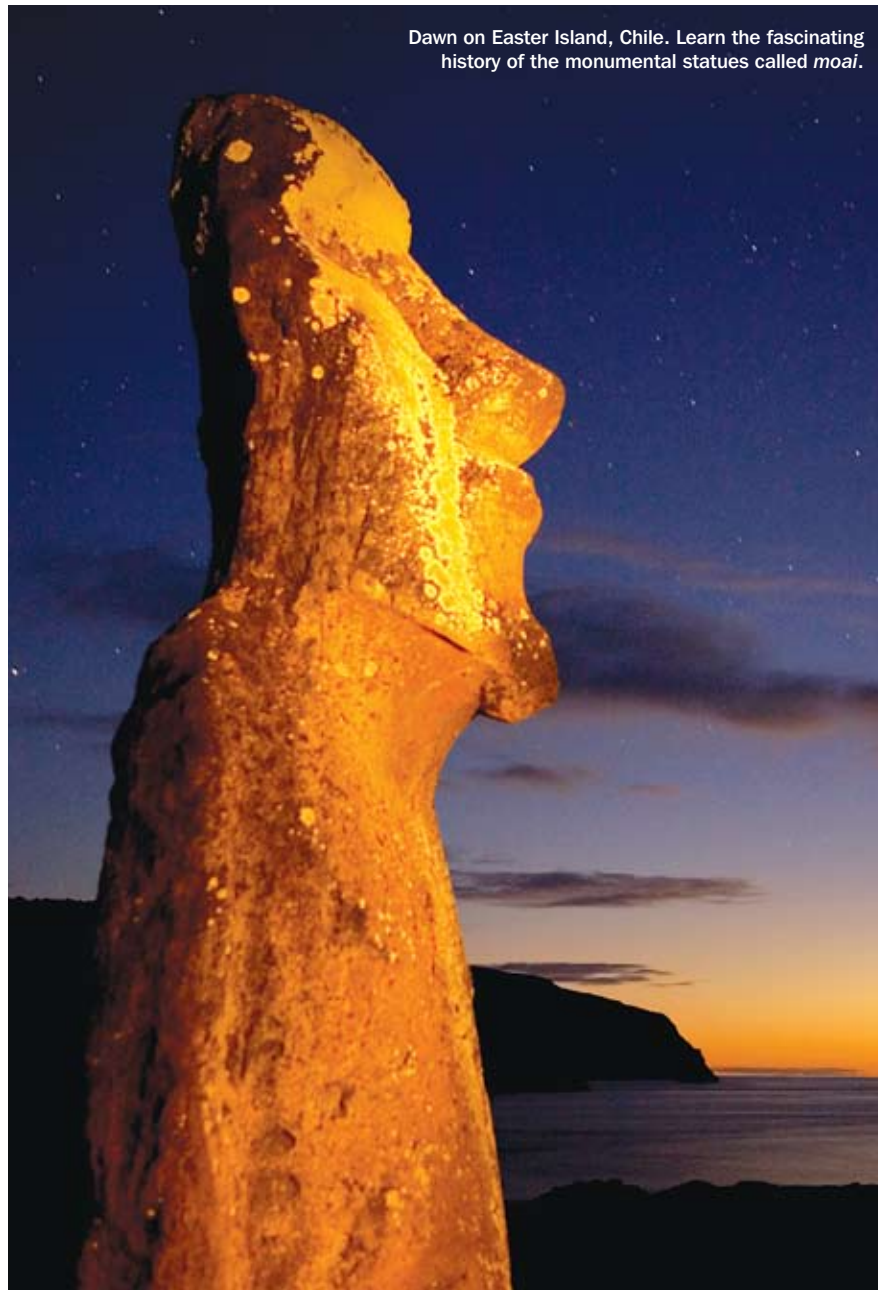
**ANTARCTICA + EASTER ISLAND: 19 DAYS/16 NIGHTS**

**ANTARCTICA, SOUTH GEORGIA & FALKLANDS + EASTER ISLAND: 29 DAYS/26 NIGHTS**

**CAPE TO CAPE + EASTER ISLAND: 31 DAYS/28 NIGHTS**

PRICES FROM: \$2,190. To be added to your voyage cost. Does not include airfare to/from Easter Island.

Welcome to Easter Island! Just twelve miles long, beyond Easter Island's eastern horizon the waves run for 2,000 miles to South America. For centuries man lived alone here — gaining the freedom to develop one of the most amazing cultures of the Pacific. Not only did the ancients carve, move and erect 100-ton stone statues, they also invented three forms of writing. Today it is an extraordinary open-air museum of Polynesia.



Dawn on Easter Island, Chile. Learn the fascinating history of the monumental statues called moai.

I have been immensely lucky to live here, surveying archaeological sites, restoring monuments, delving into history and recording the fading voices of the elders. I invite you to visit our Research Center and meet my colleagues, so we can see these monuments and tell you the enthralling story revealed by our research. I also invite you to dinner at my home with my extended Polynesian family and friends to share many wonderful anecdotes and Polynesian traditions. So please come see us now. The times are changing, and we are protesting plans for a casino and hotels. Now is your chance to see an unspoiled Easter Island.

— **Edmundo Edwards, Archaeologist & Eastern Polynesian Historian**

### POST-VOYAGE ITINERARY AT-A-GLANCE

**DAY 1:** Ushuaia, Argentina/ Disembark/Fly to Santiago, Chile/ Grand Hyatt (B,L,D)

**DAY 2:** Santiago/Fly to Easter Island/Taha Tai Hotel (B,L,D)

**DAYS 3-4:** Easter Island (B,L,D)

**DAY 5:** Easter Island/Fly to Santiago/Fly to U.S. (B,L)

**DAY 6:** Arrive U.S./Home

**NOTE:** Dates subject to change based on airline schedules, and additional costs will apply.

## Land of the Inca & Machu Picchu: Optional Extension

**PERU + ANTARCTICA: 21 DAYS/19 NIGHTS**

**PERU + ANTARCTICA, SOUTH GEORGIA & FALKLANDS: 31 DAYS/29 NIGHTS**

PRICES FROM: \$3,420 double; \$4,280 solo. To be added to your voyage cost. Does not include air fare Lima/Santiago.



Machu Picchu.

Take advantage of Peru's proximity to Santiago (our gateway to the Antarctic) and add this pre-voyage exploration of the Land of the Inca before journeying south to Antarctica. Discover the Sacred Valley of the Inca, where expert guides reveal the massive Inca stone fortress of Ollantaytambo. Explore the winding, colonial streets of Cusco, the Inca Empire's capital city. Witness the majesty of Machu Picchu, where we have



an in-depth guided visit. Situated high above the Urubamba Valley, and often referred to as the "Lost City of the Incas," Machu Picchu is probably the most familiar symbol of the Inca Empire. You'll overnight near the site at the 31-room Orient Express Sanctuary Lodge, which means you'll share Machu Picchu with only a handful of visitors and have the opportunity to see daybreak at the ruins from the fabled Sun Gate. This new extension begins in the fall of 2009.

### POST-VOYAGE ITINERARY AT-A-GLANCE

**DAY 1:** Depart U.S./Lima, Peru (Orient Express Miraflores Park Hotel)

**DAY 2:** Fly Lima To Cusco/Sacred Valley Of The Inca (Sol y Luna, 2 Nights) (B,L,D)

**DAY 3:** Sacred Valley Of The Inca (B,L,D)

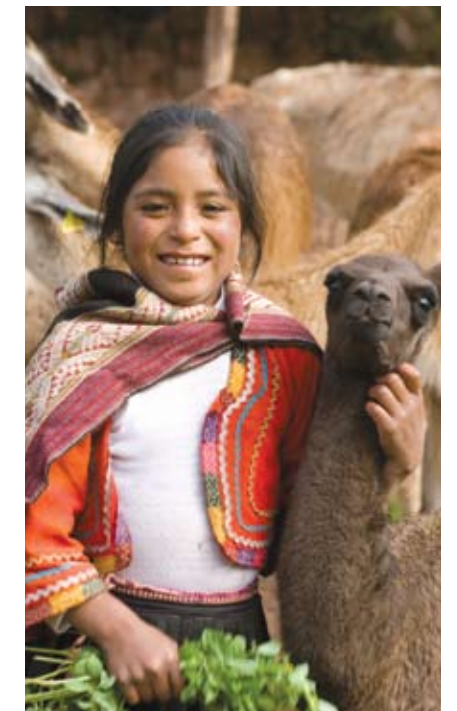
**DAY 4:** Sacred Valley/Machu Picchu (Orient Express Sanctuary Lodge) (B,L,D)

**DAY 5:** Machu Picchu/Cusco (Orient Express Monasterio Hotel, 2 Nights) (B,L,D)

**DAY 6:** Cusco (B,L)

**DAY 7:** Cusco/Lima (Orient Express Miraflores Park Hotel) (B,L)

**DAY 8:** Lima/Santiago





# THE ARCTIC

A satellite-style photograph of the Arctic region. The central feature is the vast, white Arctic ice cap, which is surrounded by the dark blue waters of the Arctic Ocean. The surrounding landmasses, including parts of North America, Europe, and Asia, are visible in shades of green and brown, indicating vegetation and terrain. The overall scene is a high-angle, top-down view of the polar region.

The animals in the Arctic ... come north in staggering numbers, travel hundreds or even thousands of miles to be here during those few weeks when life swirls in the water and on the tundra and in the balmy air ... you can feel the land filling up, feel something physical rising in it under the influence of the light, an embrace or exaltation.

— Barry Lopez, *Arctic Dreams*



**Travel with the best ice team on earth, see the best the ice has to offer**

Under the midnight sun, near Europe's northernmost point, lies the Svalbard archipelago, a hauntingly beautiful wilderness known only to the adventurous few. It's the home of the *isbjorn*, Norwegian for ice bear, lord of the ice.

Most people have only ever seen a polar bear in a zoo. The guests who join us on an Arctic expedition join the ranks of the select few who have had the privilege of observing polar bears not only in the wild, but in the spectacular landscape of the pack ice, its natural habitat. This is a far cry from seeing these magnificent animals in captivity, or connected to a settlement as scavengers. And observing is a far cry from seeing. It's the behavior that is so fascinating: A mother nuzzling her cub. Two rollicking cubs tumbling down the slope of an immaculate berg. An adult male leaping from floe to floe with effortless power and grace. But in order to observe them, we have to find them. There are thousands of square miles of ice in the Arctic seascape; and there's no "cue the bears" signal to make sure they appear. And that's what makes our Arctic expeditions so exciting – the hunt. We guarantee you'll feel it: The stirring of something primal within, the thrill, as you see



the spotters on the expedition team train their ice-adapted eyes on the horizon, scanning for the telltale tinge of ivory against the white. The call comes suddenly: "Bear to starboard." And suddenly, everyone is out on deck, as our 6,000-ton ship, cutting its speed and moving in as stealthily as a stalking cat, puts you right there, as close to a wild polar bear as you'll ever want to get. Because we're on an expedition, these moments of pure discovery are the agenda, and you'll have the time to watch, or aim for the money shot, without being snatched away from a rare experience. And despite how hard it is to deliver this wild encounter, we have a remarkable 20-year success rate. Last season we sighted a total of 128 bears. You'll also have the advantage of sharing the deck rail with a National Geographic photographer or two. And there's nothing like getting tips from the same pros whose images make NATIONAL GEOGRAPHIC magazine a monthly "must-see."

*National Geographic photographers and Lindblad photo specialists are an integral part of our ice team. Check the enclosed itineraries to learn who'll be on your expedition. And count on picking up useful tips and strategies for improving your field shots.*



**Not far from civilization, out of this world**





Few of nature's marvels match the intense aliveness of an arctic summer. The stricken tundra greens and bursts into bloom. The land and the sea welcome the animals that come in flocks, herds and pods to feast amid the plenty.

Huge herds of giant walrus. Lone polar bears stalking the pack ice for seals, present in the hundreds. Humpbacks, sperm whales, orcas and other species. Herds of caribou ceaselessly grazing the tundra, vivid with a fragile, fleeting profusion of wildflowers. Vast numbers of birds, filling the skies and busily nesting in the rock faces of massive sea cliffs, foraging, parenting — before the brief burst of summer ends. Everywhere you look in an arctic summer, there's beauty. Haunting landscapes. Massive grey-veined blue glaciers. Tiny fishing villages dotting the coast. The majestic fjords of the North Cape. The legendary Arctic explorer, Fridtjof Nansen,

entered this in his expedition diary: "Nothing is more wonderfully beautiful than the arctic night... painted in the imagination's most delicate tints; it is color etherealized. No forms... all faint, dreamy color music." Head with us into the High North this season to experience summer like never before and see the colors of life in the ice.

Remarkably few travelers know the High Arctic. To see more images of this mysterious realm, go to [expeditions.com/ice](https://www.expeditions.com/ice) to view video chronicles and slideshows.



The sheer variety of life in the Arctic: Top left: Arctic tern, Svalbard. Top right, clockwise: Bearded seal, swimming near Storpollen Glacier in the Svalbard Archipelago; a small feather shows the miniature scale of the tundra flowers — purple saxifrage with yellow bog saxifrage; a walrus cow carefully sniffs her young calf; dun-colored caribou roam the summer-green tundra plain.

# Land of the Ice Bears: In-depth Exploration of Arctic Svalbard

**11 DAYS/9 NIGHTS — NATIONAL GEOGRAPHIC EXPLORER**

DEPARTURES: 2009 Jul. 3, 10, 17, 24, 31 All departures are Photo Expeditions

PRICES FROM: \$6,920 to \$12,560 (See pages 44-45 for complete prices.)



Photos left to right: Mother polar bear and cub; guest on wildlife watch; arctic reindeer, Svalbard.

## EXPEDITION HIGHLIGHTS

- ▶ SEE POLAR BEARS IN THEIR NATURAL HABITAT ON THE SEA ICE.
- ▶ EXPERIENCE THE LEGENDARY MIDNIGHT SUN, WHEN THE SUN NEVER SETS.
- ▶ OBSERVE WALRUSES, SEALS, ARCTIC FOXES AND REINDEER ALONG THE PACK ICE.

**With a knack for spotting bears, your expert Expedition Team will point out arctic wildlife.**

**EXPEDITION LEADER:** Lindblad veteran Bud Lehnhausen (right), with years of polar experience, will share stories of his adventures with you.



**POLAR SPECIALIST:** Dr. Tom Smith (left) consults on polar research programs, and his films include National Geographic's *Life at the Edge*.



**NATURALIST:** Norwegian Kenneth Mosen has had the opportunity to guide a dogsled and overwinter in Svalbard.

**NATIONAL GEOGRAPHIC SPECIALISTS:** Travel with National Geographic Photographer Ralph Lee Hopkins; Pulitzer Prize-winning Photographer Jay Dickman and more.

*Expedition staff varies by voyage date. Check our web site for full bios of experts on your selected departure.*



Walrus, Svalbard, Norway

Travel under the midnight sun aboard our comfortable, ice-strengthened ship as we travel through a land of deep fjords, snow-capped mountains, and massive ice sheets to encounter the king of the Arctic — polar bears. Our long experience in this region along with a flexible and unhurried itinerary allows us to maximize sightings. National Geographic Photographers help us best capture every encounter.

**DAY 1: U.S./OSLO, NORWAY**  
Fly from Newark to Oslo on

an overnight flight aboard SAS Scandinavian Airlines.

### DAY 2: OSLO

Upon arrival, check in to the Continental Hotel. Later, stroll among the famed Vigeland sculptures set in parklands and make a visit to the Polar Ship Fram Museum.

### DAY 3: OSLO/LONGYEARBYEN/EMBARK

Take a private charter flight to Longyearbyen and embark our ship. (B,L,D)

### DAYS 4-9: EXPLORING SVALBARD

In true expedition style, we will let nature dictate our day-to-day movements and remain flexible, maximizing our opportunities to observe Svalbard's abundant wildlife. With our fully stabilized ice-class expedition ship, we probe the ice in search of seals, arctic foxes and the very symbol of the Arctic — polar bears. Once spotted, the scene is one of sheer excitement and reverence for these

great animals. They are often seen on the pack ice searching for a meal, but a few times each season we sight a bear which has recently caught a seal. Cruising in Svalbard's fjords in the legendary land of the midnight sun, we venture to the foot of stunning tidewater glaciers. Zodiac and kayaks among beautiful icebergs, and experience the geology, wildlife and wildflowers that give color and vitality to the High Arctic. (B,L,D)

### DAY 10: LONGYEARBYEN/DISEMBARK/OSLO

Disembark and explore Longyearbyen before we fly

to Oslo. Overnight Radisson SAS Airport Hotel. (B,L)

### DAY 11: OSLO/HOME (B)

#### Optional Extensions

**Norwegian Fjords, Pre-voyage**

**4 Days**

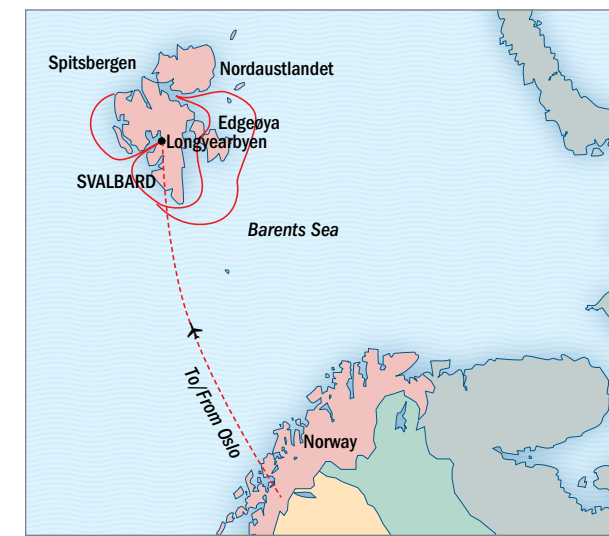
**Please call for details.**

**Exploring Iceland, Post-voyage**

**4 Days**

**Please call for details.**

EXPLORE MORE ON THE WEB AT  
[WWW.EXPEDITIONS.COM/ARCTIC](http://WWW.EXPEDITIONS.COM/ARCTIC)  
AND SELECT THIS ITINERARY.




Long beautiful days, long scenic walks in Svalbard.

# Beyond the North Cape: Norway's Fjords & Arctic Svalbard

16 DAYS/14 NIGHTS — NATIONAL GEOGRAPHIC EXPLORER

DEPARTURES: 2009 Jun. 21; Aug. 7\*

 All departures are Photo Expeditions \*Travels from Longyearbyen to Bergen

PRICES FROM: \$9,680 to \$17,670 (See pages 44-45 for complete prices.)



Photos left to right: Kayakers in late evening light; observing a polar bear in the wild is a rare privilege; Zodiacs enable you to explore up close.

## EXPEDITION HIGHLIGHTS

- ▶ EXPLORE NORWAY'S FAMOUS TROLLFJORD AND LESS-VISITED NORDFJORD AND MELFJORD.
- ▶ OBSERVE POLAR BEARS IN THEIR NATURAL HABITAT — ON THE SEA ICE.
- ▶ KAYAK IN A QUIET FJORD OR AMID ICEBERGS IN AN ARCTIC COVE.

### Explore the Arctic with a veteran Expedition Team — Their passion for all things polar makes all the difference.

**NATURALIST:** With a passion for all things polar, (right) Stefan Lundgren has written books including *Svalbard — The Land Beyond the North Cape*.

**NATURALIST:** Carl-Erik Kilander, former environmental adviser for the Norwegian State Forest Service, has broad knowledge of Norway's wilderness.

**NATIONAL GEOGRAPHIC SPECIALISTS:** Travel with National Geographic Photographers Jim Richardson and Jay Dickman.

*Expedition staff varies by voyage date. Check our web site for full bios of experts on your selected departure.*



Combine the glaciers and wild polar bears of Svalbard with the fjords and green summerscape of coastal Norway. Our seasoned Captains and expedition staff will bring you far north, to an expansive wilderness region of towering glaciers, deep fjords, mountains and massive ice sheets. They have been exploring this region for years, even decades, and take us to the "lesser-traveled" and back safely.

**DAY 1: U.S./BERGEN, NORWAY (VIA COPENHAGEN)**

**DAY 2: BERGEN, NORWAY/EMBARK**  
Arrive in the Hanseatic town of Bergen, the gateway to the

fjordlands. Stroll Bryggens Wharf before embarkation. (L,D)

#### DAY 3: NORDFJORD

Travel through the little-touristed Nordfjord and transfer for a ride via coach through Olden Valley's jagged mountains and turquoise lake. Hike through deep glacially-carved valleys to Jostedal Glacier. (B,L,D)

#### DAYS 4-5: EXPLORING THE FJORDS OF NORWAY

Explore a variety of landing possibilities among the rugged, mountainous islands and steep-walled fjords: Zodiac along vertical rock faces, paddle a kayak in a deep fjord surrounded by waterfalls,



or hike with our Naturalists. Over the years, we've discovered a number of special places, including Melfjord, a narrow channel surrounded by steep granite cliffs. (B,L,D)

#### DAY 6: LOFOTEN ISLANDS

Travel by Zodiac to view Atlantic puffins, razorbills and guillemots.

Go ashore at the fishing village of Aa. Later, cruise into the dramatic Trollfjord, one of the most famous fjords in Norway. (B,L,D)

#### DAY 7: TYSFJORDEN

This morning, enter the long fjord of Tysfjorden, where only a few small villages cling to the rocky shores. Explore Hellembotn and the area's numerous side channels by Zodiac, kayak or on foot. (B,L,D)

#### DAY 8: TROMSØ

Tromsø is the "Gateway to the Arctic." Visit the Arctic Cathedral and Polar Museum. (B,L,D)

#### DAY 9: EXPLORING

Having spent a full week in coastal Norway, we'll now set

our sights toward the High Arctic. We'll leave this day open to take advantage of weather conditions or wildlife opportunities, before heading for Bear Island, or maybe venturing immediately north to see what wildlife awaits. (B,L,D)

#### DAY 10: AT SEA/BEAR ISLAND

Zodiac around mist-shrouded Bear Island, populated by thousands of fulmars, kittiwakes, guillemots and gulls. (B,L,D)

#### DAYS 11-14: EXPLORING SVALBARD

The focus of these days is to search for walruses, seals, reindeer, arctic foxes and polar bears living among the deep fjords, mountains, and massive ice sheets of Svalbard. Our flexible itinerary and years of

experience here allow us to take the best advantage of ice and weather conditions. Shore walks, Zodiac and kayaking adventures bring us up close to rugged landscapes and passing icebergs. (B,L,D)

#### DAY 15: LONGYEARBYEN/DISEMBARK/OSLO

Disembark in Longyearbyen and visit the Svalbard Art Gallery and Museum. Then, proceed to the airport for our charter flight to Oslo. Check in to the SAS Radisson Airport Hotel. (B,L)

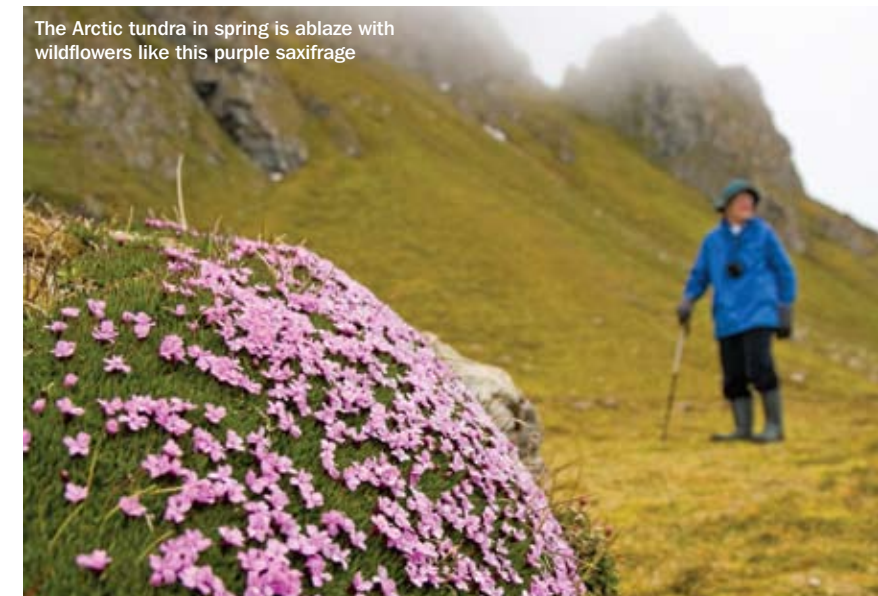
#### DAY 16: OSLO/HOME (B)

### Optional Extension

#### Exploring Iceland, Post-voyage

##### 4 Days

Iceland is the land of contrasts: the land of fire and ice. Only here do volcanoes, boiling hot springs, bubbling mud pools and spouting geysers coexist with massive icecaps and glaciers. Let the adventure continue with a journey to Iceland's geological wonders. Please call for details.



The Arctic tundra in spring is ablaze with wildflowers like this purple saxifrage

EXPLORE MORE ON THE WEB AT  
[WWW.EXPEDITIONS.COM/ARCTIC](http://WWW.EXPEDITIONS.COM/ARCTIC)  
AND SELECT THIS ITINERARY.





French philosopher, Gaston Bachelard, coined the term “intimate immensity.” Taken out of his context, it aptly describes the deep satisfactions of being inside our warm ship, aglow with comfort, ease and sociability with the daunting vastness of the ice around us.



Feed your mind or savor alone time in the Library.

Be rigorous, indulgent or both in the Fitness Center and Wellness Spa.

Spark a friendship in the Lounge or on deck.

Dining is excellent: Full buffet breakfasts, casual lunches, leisurely dinners and no assigned seating.

Our onboard style mixes casual clothes, relaxed attitudes, curious travelers and intelligent conversation.

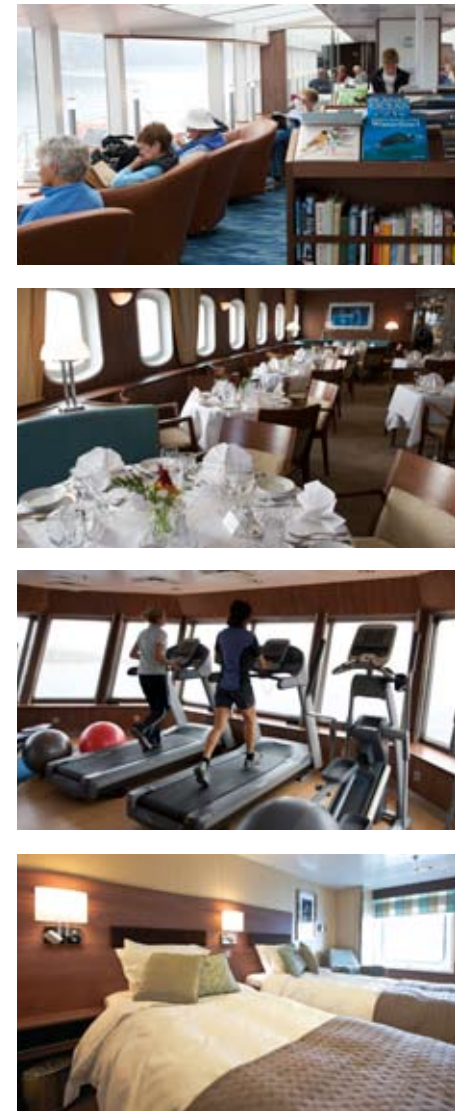
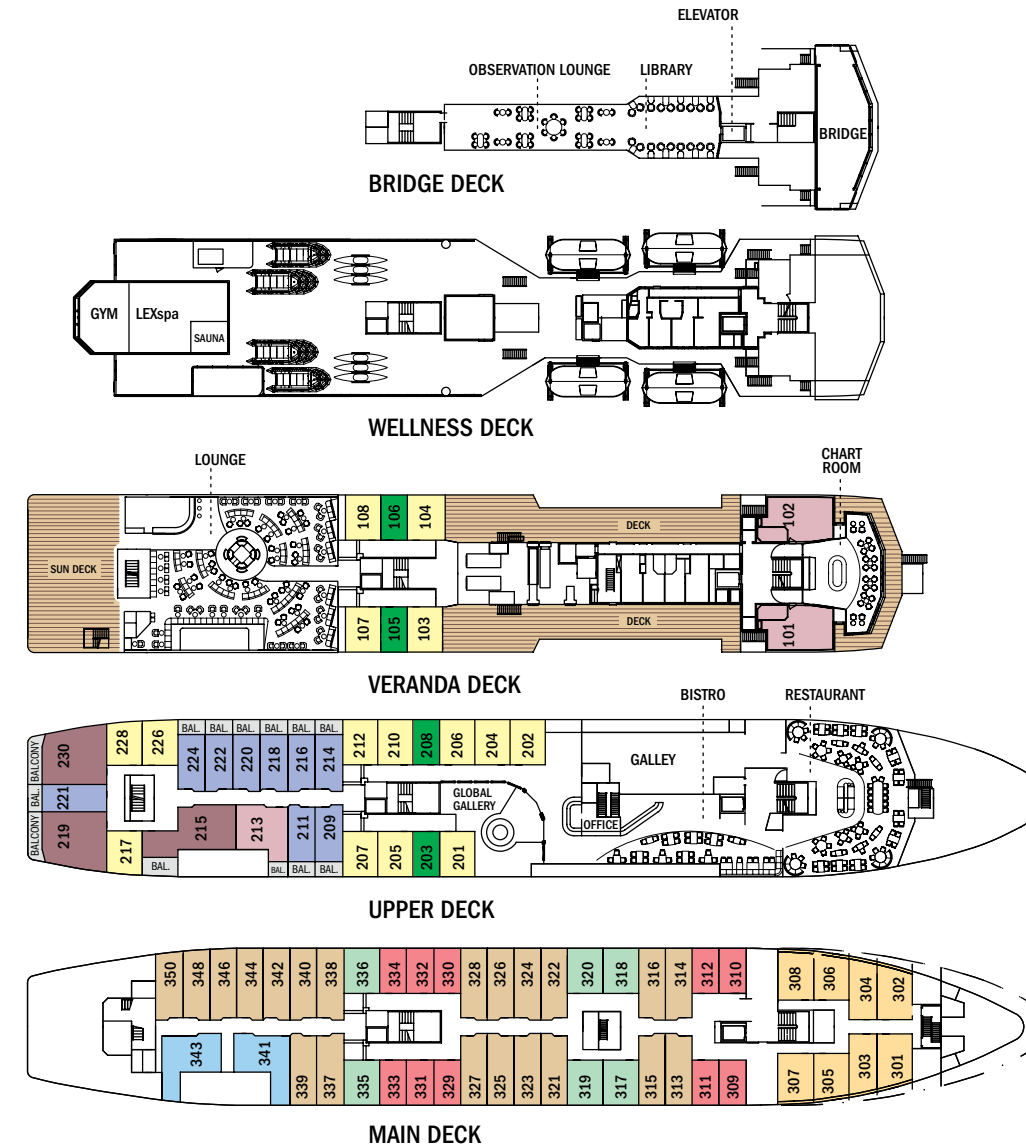


# National Geographic Explorer



**CAPACITY:** 148 guests in 81 outside cabins.  
**REGISTRY:** Bahamas. **OVERALL LENGTH:** 356 feet.  
*National Geographic Explorer* is a state-of-the-art expedition ship, and the newest addition to the Lindblad fleet. It is a fully stabilized, ice-class vessel, enabling it to navigate polar passages while providing comfort. It carries kayaks and a fleet of Zodiac landing craft. An Undersea Specialist operates sophisticated underwater video equipment, extending access to the undersea.  
**PUBLIC AREAS:** Bistro Bar; Chart Room; Restaurant; Elevator on guest decks; Global Gallery; Library, Lounge with full service bar and state-of-the-art facilities for films, slideshows and presentations; Mud Room with lockers for expedition gear, and Observation Lounge. Our "Open Bridge" provides guests an opportunity to meet our Officers and Captain and learn about navigation.  
**MEALS:** Single seatings with unassigned tables for an informal atmosphere and easy mingling. Menu is international with local flair.  
**CABINS:** All cabins face outside with windows or portholes, private facilities and climate controls.  
**EXPEDITION EQUIPMENT:** Zodiac landing craft, kayaks, Remotely Operated Vehicle (ROV), hydrophone, SplashCam, underwater video camera, video microscope.  
**SPECIAL FEATURES:** A full-time doctor, Undersea Specialist, LEX Photo Specialist and Video Chronicler, Internet cafe and laundry.  
**WELLNESS:** The vessel is staffed by two Wellness Specialists and features a glass-enclosed Fitness Center, outdoor stretching area, two LEXspa treatment rooms and Sauna.

- CATEGORY 1:** Main Deck with Porthole #301-308
  - CATEGORY 2:** Main Deck with Window #317-320, 335-336
  - CATEGORY 3:** Upper and Veranda Decks with Window #103-104, 107-108, 201-202, 204-207, 210, 212, 217, 226, 228
  - CATEGORY 4:** Main Decks with Window #313-316, 321-328, 337-340, 342, 344, 346, 348, 350
  - CATEGORY 5:** Main Deck with Window #341, 343
  - CATEGORY 6:** Upper Deck with Balcony #209, 211, 214, 216, 218, 220-222, 224
  - CATEGORY 7:** Veranda Deck-Suite #101-102; Upper Deck-Suite with Balcony #213
  - CATEGORY 8:** Upper Deck-Suite with Balcony #215, 219, 230
  - CATEGORY 2 SOLO:** Main Deck with Window #309-312, 329-334
  - CATEGORY 3 SOLO:** Upper and Veranda Decks with Window #105-106, 203, 208
- SHARED ACCOMMODATIONS:** Available in Categories 1 and 2.  
**NOTE:** Cabins #209, 211, 214, 216-218, 220, 222, 224, 226, 228, 303-306 – These cabins have one queen-sized bed. All other double cabins have two lower single beds, some can convert to a queen-sized bed. Note: Sole occupancy cabins available in Categories 2 and 3.



Photos from top: Library; Dining Room; Fitness Center; Category 4 cabin

Prices are per person, double occupancy unless indicated as solo.

ITINERARY	YEAR	CAT. 1	CAT. 2	CAT. 3	CAT. 4	CAT. 5	CAT. 6	CAT. 7	CAT. 8	CAT. 2 SOLO	CAT. 3 SOLO	ADVANCE PAYMENT	NOTE: SEE ITINERARY PAGES FOR COMPLIMENTARY AIRFARE ON SELECT DEPARTURES.
Antarctica - Page 22	2008/09	\$10,250	\$10,870	\$11,390	\$11,850	\$14,130	\$14,130	\$16,320	\$18,930	\$13,590	\$14,240	\$1,000	Charter flights Santiago/Ushuaia/ Santiago are included. Chilean immigration fee is not included. Sample Airfare: Round-trip Miami/Santiago: Economy from \$1,290; Business from \$4,295
	2009/10	\$10,760	\$11,390	\$11,960	\$12,390	\$14,790	\$14,790	\$17,130	\$19,870	\$14,190	\$14,950	\$1,000	
Antarctica, South Georgia & Falklands - Page 24	2008/09	\$17,590	\$18,690	\$19,630	\$20,390	\$24,360	\$24,360	\$28,150	\$32,640	\$23,360	\$24,540	\$1,800	Charter flights Santiago/Ushuaia/ Santiago are included. Chilean immigration fee is not included. Sample Airfare: Round-trip Miami/Santiago: Economy from \$1,290; Business from \$4,295
	2009/10	\$18,450	\$19,590	\$20,590	\$21,390	\$25,570	\$25,570	\$29,550	\$34,270	\$24,480	\$25,740	\$1,800	
Cape Horn to the Cape of Good Hope - Page 26	2009	\$17,590	\$18,690	\$19,630	\$20,390	\$24,360	\$24,360	\$28,150	\$32,640	\$23,360	\$24,540	\$1,500	Charter flight Santiago/Ushuaia is included. Chilean immigration fee is not included. Sample Airfare: Miami/Santiago, Cape Town/NY. Economy from \$2,000.
Land of the Ice Bears - Page 38	2009	\$6,920	\$7,340	\$7,690	\$8,190	\$9,440	\$9,440	\$10,990	\$12,560	\$9,170	\$9,590	\$700	Charter flights Oslo/Longyearbyen/ Oslo are included. Sample Airfare: Round-trip Newark/Oslo: Economy from \$1,325; Business from \$3,440
Beyond the North Cape - Page 40	2009	\$9,680	\$10,240	\$10,750	\$11,580	\$13,330	\$13,330	\$15,390	\$17,670	\$12,790	\$13,440	\$1,000	Charter flight Longyearbyen/Oslo is included. Sample Airfare: Newark/Bergen, Oslo/Newark or vice versa: Economy from \$1,325; Business from \$3,440



# Take advantage of our special offers:

## COMPLIMENTARY AIRFARE:

Offered on select Lindblad departures. Please see bold, blue text on itinerary pages for details. All complimentary airfare is based on economy group flights and must be ticketed by Lindblad Expeditions.

## BRINGING A GROUP:

For your party of eight people or more, you'll each receive 5% off the expedition cost. A deposit of 10% of the trip cost is required when reserving, and an additional 25% is required 120 days in advance. Final payment is due 90 days in advance. (Excludes airfare and extensions.) NOTE: If taking advantage of this discount, a variation of the cancellation policy will apply.

## BACK-TO-BACK SAVINGS:

Save 10% on any consecutive voyages taken aboard *National Geographic Explorer*. (Excludes extensions and airfares.)

## BRINGING THE KIDS:

We believe sharing an expedition with your kids or grandkids is a life-enhancing experience. So, take \$500 off the Double Occupancy price for each person under 18.

## COMBINING-OFFERS POLICY:

If the expedition that interests you provides more than one savings opportunity (i.e. it is eligible for complimentary airfare and Kids savings), we won't make you choose between them — you may combine up to 2 offers from any of the applicable offers.

## VALUE-VOUCHER POLICY:

You, our guest, come first to us. So, in the event that we discount a departure for which you are booked, we will extend you the courtesy of a matching discount. You'll receive a certificate representing the value of the promotional discount, which can be applied to any future Lindblad Expeditions voyage. It is transferable at your discretion.



## VIDEO CHRONICLES

All of our expeditions travel with a Video Chronicler to capture every facet of your unique adventure — wildlife sightings, Zodiac landings, hikes, kayaking adventures, your expedition team & much more. Your video is professionally edited on-board, available for you to purchase & depart with it. Now, you can return home with more than just a great experience: visual proof of your intrepid spirit!

## Selected Honors and Awards

- 2007 World Travel & Tourism Council "Global Tourism Business Award"
- 2007 Seafood Champion Award
- 2006 Newly discovered endemic species of moth *Undulambia Lindbladi* named in honor of Sven Lindblad's dedication to Galapagos conservation.
- 1997-2002, 2005-2008 Condé Nast Traveler "Gold List"
- 1996-2006 Condé Nast Traveler Readers' Choice Award.
- 2000-2006, 2008 Travel + Leisure Tour Operator & Small Ship Cruise Line "World's Best" Award
- 2002 Condé Nast Traveler Ecotourism Award
- 2001 United Nations Environment Programme Global 500 Award, conferred upon Sven-Olof Lindblad



## Reservation Information

**Costs Include:** All accommodations aboard ship or in hotels per itinerary or similar, all meals aboard ship, air transportation where indicated as included, all shore excursions and sightseeing, entrance fees, special access permits, transfers to and from group flights, use of kayaks, tips (except to ship's crew), taxes and service charges, services of a ship physician and services of our expedition staff.

**Not Included:** Air transportation (except where shown as included), extensions, passport, visa, security fees, immigration fees, meals not indicated, baggage/accident/travel protection plan, items of a personal nature, such as alcoholic beverages, e-mail, voyage DVD, laundry. Gratuities to ship's crew at your discretion.

**Sample Airfare:** Airfare is an additional cost unless otherwise indicated. Sample airfares are subject to change. We will gladly assist in making your air arrangements. There will be a \$50 per person service fee if you elect for Lindblad Expeditions to handle your air arrangements.

**Note:** Complete pre-journey information, including suggestions on what to bring and recommended reading, will be sent to you approximately four months prior to departure.

## TERMS & CONDITIONS

**Reservations:** To reserve your place, an advance payment for the program as outlined is required at the time of reservation and is payable by Visa, MasterCard, American Express, Discover or check. The per person amount due is noted on page 45.

**Final Payment:** Due 90 days prior to departure.

**Travel Protection Plan:** Travel protection and medical insurance are available at extra cost. Ask about our comprehensive guest travel protection plan for a worry-free expedition.

**Smoking Policy:** Smoking is allowed only in designated outdoor areas.

**Responsibility:** Certain other provisions concerning, among other things, limitations of Lindblad Expeditions' and the National Geographic Society's liability for loss of property, injury, illness or death during the voyage will be provided to all guests on the ship's ticket sent prior to departure, and are also available at [www.expeditions.com/terms](http://www.expeditions.com/terms), or upon request. By registering for a trip, the guest agrees to all such terms and conditions.

*Note: Itineraries and prices listed in this brochure are as of publication date, and are subject to change. The company reserves the right to impose surcharges based on increases in the company's actual cost of fuel.*

Lindblad Expeditions, as an Active Member of the United States Tour Operators Association ("USTOA"), is required to post \$1 Million with USTOA to be used to reimburse, in accordance with the terms and conditions of the USTOA Travelers Assistance Program, the advance payments of Lindblad Expeditions customers in the unlikely event of Lindblad Expeditions bankruptcy, insolvency or cessation of business. Complete details of the USTOA Travelers Assistance Program may be obtained by writing to USTOA at 275 Madison Avenue, Suite 2014, NY, NY 10016, or by e-mail to [information@ustoa.com](mailto:information@ustoa.com) or by visiting their website at [www.USTOA.com](http://www.USTOA.com).

## CANCELLATION POLICY:

### For Expeditions 9 Nights or More

Number of Days Prior to Expedition Start	Per Person Cancellation Fee
120 or more days	\$150*
119-90 days	Advance payment cost
89-60 days	25% of trip cost
59-30 days	50% of trip cost
29-0 days	No refund

*This policy applies to expeditions and extensions. We strongly recommend that you purchase a travel protection plan. \*You will be issued a \$150 Lindblad Expeditions Travel Certificate.*

**Photo Credits:** Sisse Brimberg & Cotton Coulson, Stewart Cohen, Benjamin Hagerstand, Ralph Lee Hopkins, Brent Houston, Sven-Olof Lindblad, Robert Alan Millman, Paul Nicklen, Michael S. Nolan, Kevin Schafer, Jack Swenson, Rikki Swenson

NATIONAL GEOGRAPHIC and the Yellow Border are the trademarks of the National Geographic Society. All rights reserved. Lindblad Expeditions and the Eye are the trademarks of Lindblad Expeditions. All rights reserved. Printed on recycled paper using soy-based inks ©2008 Lindblad Expeditions

[www.expeditions.com](http://www.expeditions.com)  
DAILY EXPEDITION REPORT  
JULY 8, 2007, OLGA STRAIT, SVALBARD



In the land of the midnight sun the golden hour for photography is a gift that seems to last and last and last. Throw in a young polar bear that literally walked across the ice floe to come and sniff the bow of the ship and our entire group felt as if they had died and entered Valhalla...Our curious bear inspected the ship from stem to stern. An hour and a half flew by as if it were only moments as this curious bear inspected us. Just who was watching whom? To read this whole report and reports from all our global expeditions, go to: [expeditions.com](http://expeditions.com).

## ADVENTURE COLLECTION

We are proud to be a Founding Member of Adventure Collection — a family of the world's most trusted and experienced active travel companies. Each member company of Adventure Collection is dedicated to enriching the lives of its guests and to giving back to the areas in which it travels. For more information visit [www.AdventureCollection.com](http://www.AdventureCollection.com).

**FOR RESERVATIONS:**  
Contact your travel agent



Travel with engaging, entertaining and knowledgeable experts.

Share the deck rail, a drink in the Lounge or a fascinating dinner conversation with National Geographic photographers and explorers. Enjoy their company while profiting from their knowledge and experience. Accompanied by our veteran team of marine mammal experts, geologists, birders, historians, undersea specialists and expedition leaders, your experience will be the equivalent of a private docent tour – of the “living museum” of the ice.



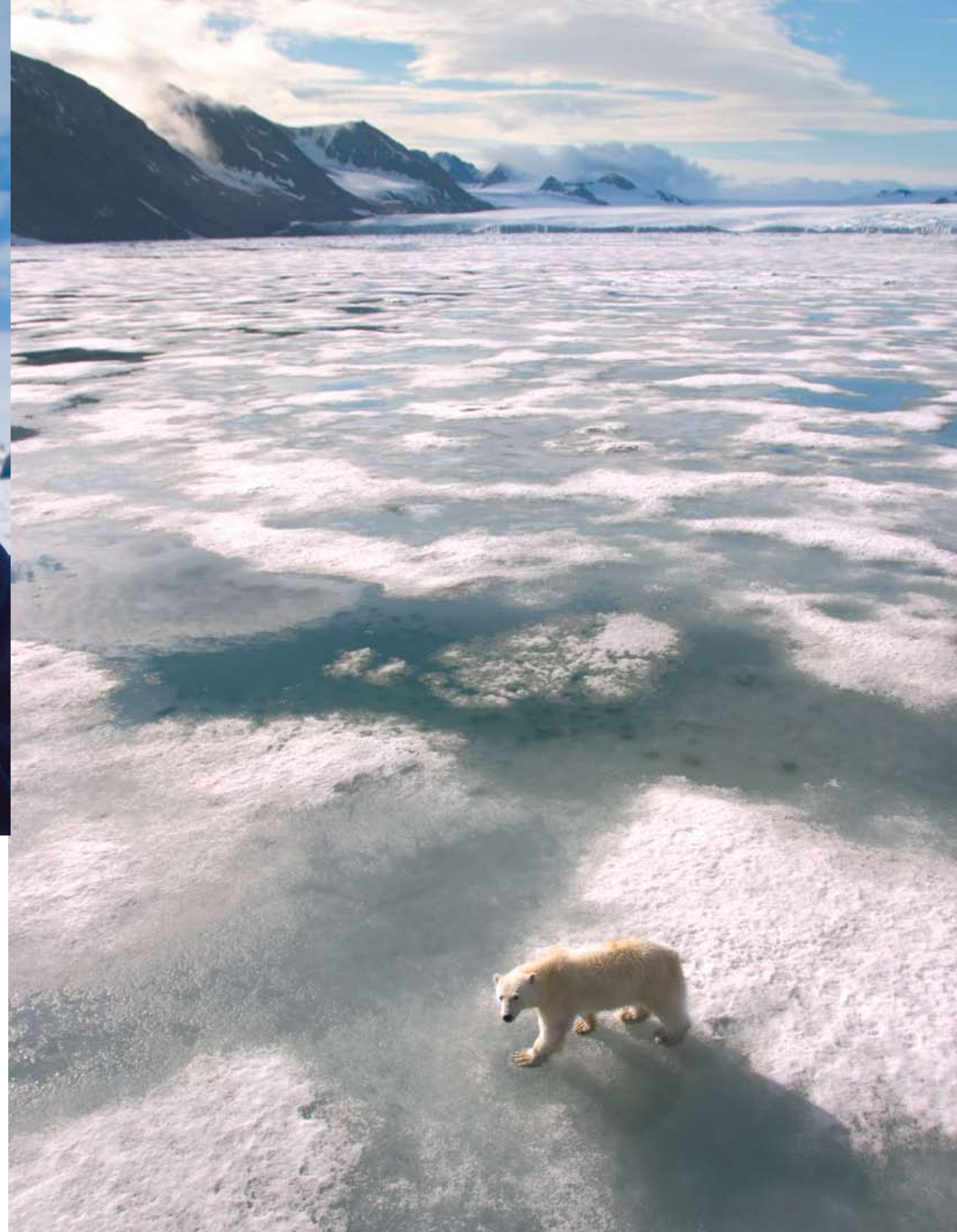
From left: National Geographic Photographers Flip Nicklin and Sisse Brimberg, Lindblad Expeditions Expedition Leaders Tom Ritchie and Bud Lenhausen. Find bios and more at [expeditions.com/ice](http://expeditions.com/ice).

**Go with the best ice team on earth, have the adventure of a lifetime.**

## A window of opportunity

Once, the vital issue was convincing people that climate change was a genuine threat. Now, thanks to *An Inconvenient Truth* and a massive media diet, it's morphed into: What are we going to do about it? We recently took a key step toward action: **The Arctic Expedition for Climate Action**. Sponsored by Lindblad Expeditions, National Geographic and the Aspen Institute, this voyage took over 100 leaders from science, business, policy, religion, labor and the environment aboard National Geographic Endeavour into Arctic Svalbard to focus on the gravest challenge our species has ever faced. After days of deep dives into the topic, we emerged with a sense of urgency, hope and a shared framework for action. I encourage you to log on to see who participated, what we learned and why we see exciting opportunities ahead. And please, share this link with all who share our commitment to change: [expeditions.com/ice](http://expeditions.com/ice)

Sven Lindblad, President of Lindblad Expeditions, in Arctic Svalbard



## Take a desktop expedition [www.expeditions.com/ice](http://www.expeditions.com/ice)

Log in and head North to the Arctic or South to Antarctica on a desktop expedition. View videos and slideshows shot aboard recent expeditions by our Video Chroniclers and Photo Specialists. Feel free to share our brochure and videos with your family and friends. Whether you're literally onboard or just with us in spirit, we welcome all who share our passion for the ice and its magnificent creatures.



Dear Traveler,

I hope we have inspired you to want to experience the ice. If so, you are considering one of the most rewarding travel opportunities available, and one of the most relevant, given today's climate concerns. Obviously, it is not a decision to be taken lightly. And as you look into it further, I would simply ask you to consider my recommendations: Go there on an expedition: don't settle for anything less than the most actively engaging experience possible. And go there with us: it's the wisest decision you could make.

The ice is a challenging environment. We have the necessary experience, as well as an impeccable safety record. We also offer the focus, heart and knowledge to make your experience genuinely life-enhancing.

I invite you to visit [expeditions.com/ice](http://expeditions.com/ice) and take our "desktop expedition" to learn more about what you'll see and do in the Arctic or Antarctica. Then, please do sign on. On behalf of the entire Lindblad Expeditions & National Geographic team, we look forward to sharing the adventure with you.

Best regards,

A handwritten signature in black ink, appearing to read "Sven". The signature is stylized with a large, looping initial 'S' and a cursive 'ven'.

Sven-Olof Lindblad

P.S. Remember, to honor polar scientists, I will, with pleasure, send you a copy of *The Ends of The Earth: The Finest Writing on The Arctic and The Antarctic* if you reserve by March 31, 2009 – the official end of the current International Polar Year.



# North or South — head into the ice with us



Lindblad Expeditions and National Geographic have joined forces to further inspire the world through expedition travel. Our collaboration in exploration, research, technology and conservation will provide extraordinary travel experiences and disseminate geographic knowledge around the globe.

Expedition Code:

6ICE-FUL8

ICE-A99

Printed on post-consumer fiber using soy-based inks.