

CAPE HORN TO THE CAPE OF GOOD HOPE



SOUTH GEORGIA, THE FALKLANDS, TRISTAN DA CUNHA & CAPE TOWN
ABOARD *NATIONAL GEOGRAPHIC EXPLORER* | MARCH 2012



As astonishing as National Geographic Magazine.
As exhilarating as National Geographic Channel:
**A Lindblad-National Geographic expedition —
in an epic geography.**



**Lindblad
Expeditions**



**NATIONAL
GEOGRAPHIC™**

Lindblad Expeditions and National Geographic have joined forces to further inspire the world through expedition travel. Our collaboration in exploration, research, technology and conservation will provide extraordinary travel experiences and disseminate geographic knowledge around the globe.



Dear Traveler,

I am thrilled that we are offering this voyage again. It is a fantastic opportunity for me to return to places I love and feel privileged to know, considering their rarity and wonder. And, it's an opportunity for you, as well. Who knows when the company will decide to offer this incredible route again. When I heard we were going, I started looking through my files and was particularly struck by a map I'd saved many years ago — *The Explorers*, from the February 1998 issue of *National Geographic* magazine. It details the ocean routes of the most illustrious explorers, including Leif Erickson, Columbus, Vespucci, de Gama, Cook, and more. What I found interesting was that while each discovered vast tracts of ocean and many rounded Cape Horn or the Cape of Good Hope, according to the map no historic expedition ever pioneered a Cape to Cape route.

Clearly, that leaves the opportunity for all of us — to chart this route between two legendary geographic points. It really is a thrilling idea, and sure to be an exceptional event.

Perhaps you've done one of our ocean voyages? If so, you know that instead of the void which airplane travelers cross with weary resignation, it's a fascinating landscape of moods, sights and revelations. It gives you plenty of time — for relaxing, reading, and getting to know the others onboard, all drawn like you, to see these rare sights. And, it's an opportunity to learn new skills in creative writing, photography, navigation, cooking, and more. I've talked to a number of guests who've taken these Skills@Sea courses, and they raved about the instructors and the course contents.

But, if you have never done an ocean voyage, this would be an incredible opportunity — because, as I said, *Explorer's* route will be changing, and we won't be offering this unique voyage for some time.

You'll find yourself in great company if you join us — interesting fellow guests, our staff, and our Global Luminary, Simon Winchester — the perfect person to share the Atlantic with, since he wrote the book on it! And if you're like me, you'll be touched by how this voyage gives you an unusual and profound sense of our planet, with its complex web of interactions, much of which is clearly evident in the ocean we'll observe daily. We'll go from chilly to balmy, and observe the ocean's changes from the deck rail and through the video camera of our Undersea Specialist, and our ROV.

On behalf of our very enthusiastic team (we all vie to be on this voyage), we look forward to welcoming you aboard for a historic adventure.

Best regards,



Tom Ritchie, Naturalist

SEE OUR
**FREE CAPE TOWN
ADVENTURE &
AIR OFFER** ON PAGE 11

P.S. To see what I meant when I said Simon Winchester wrote the book on the Atlantic, see page 13.

Join the illustrious ranks of historic explorers – as we discover the route from Cape Horn to the Cape of Good Hope

SOUTH AMERICA

Buenos Aires

ARGENTINA



Falkland Islands

Ushuaia

South Georgia

"It has to be remembered that until Amerigo Vespucci, there was no knowledge – nor even a suspicion or a hint – that the Atlantic was a separate sea. Culturally, this was an ocean that until the end of the fifteenth century was not known to exist. Then, and at a stroke, with Vespucci's voyage, the Atlantic Ocean was born; suddenly it was there."

– *The Atlantic*, Simon Winchester



King penguins saunter by an elephant seal.



Photographers focus on a wandering albatross.

AFRICA

ATLANTIC OCEAN

SOUTH AFRICA



Cape Town, South Africa.



National Geographic Explorer.

Tristan
da Cunha
Group

Cape
Town



Arctic tern.

A BRIEF HISTORY OF DISCOVERY

“They had little in common but courage, and sometimes knew little of the significance of their discoveries...With time, motives for discovery changed, but not the spirit of discovery itself.”

— *The Explorers*, National Geographic Society, Cartography

Explorers who rounded Cape Horn	Explorers who rounded the Cape of Good Hope	Explorers who rounded both	Explorers who sailed Cape to Cape
Ferdinand Magellan Sir Francis Drake James Cook	Sir Francis Drake Vasco de Gama Bartolomeu Dias James Cook	James Cook Sir Francis Drake	None

Remember, you can share your history-making voyage with friends and family. Sign them up to receive Daily Expedition Reports at www.expeditions.com/DERsignup.

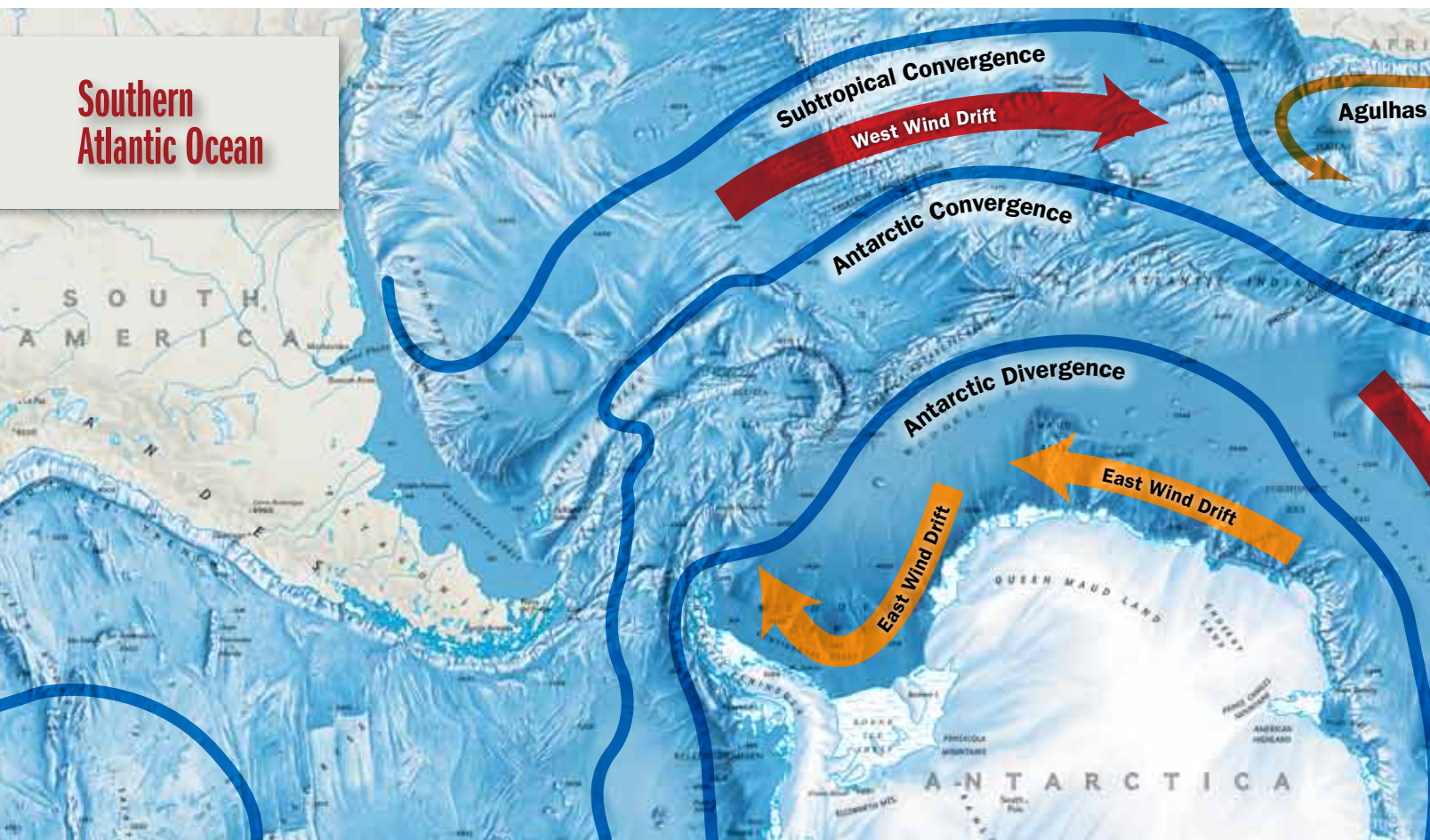
The ocean is a fascinating landscape of moods, sights and revelations. And we'll have the vantage to examine them.



Dr. Jim Kelley,
Oceanographer.

As an oceanographer, the voyage from Cape Horn to the Cape of Good Hope provides a wonderful opportunity to traverse some of the most interesting features of the global ocean. We will sail in and out of the Southern Ocean, through some of the most biologically productive waters on the planet and cross the Antarctic Convergence in both directions. Convergences are places where different water masses of the ocean come together and where we expect to see large concentrations of feeding fish, mammals and birds.

Sailing from the Falklands to South Georgia, we go from the South Atlantic waters into the Scotia Sea where the annual krill productivity is estimated to be as much as five times the human biomass of the Earth. This rich food source supports an immense number of whales and dolphins, fur seals and seabirds. Unlike the Drake Passage, where the Convergence is compressed by the narrow opening between South America and the Antarctic Peninsula, north of South Georgia the boundary is wider and more interesting as it meanders across the South Atlantic.





Black-browed albatross.

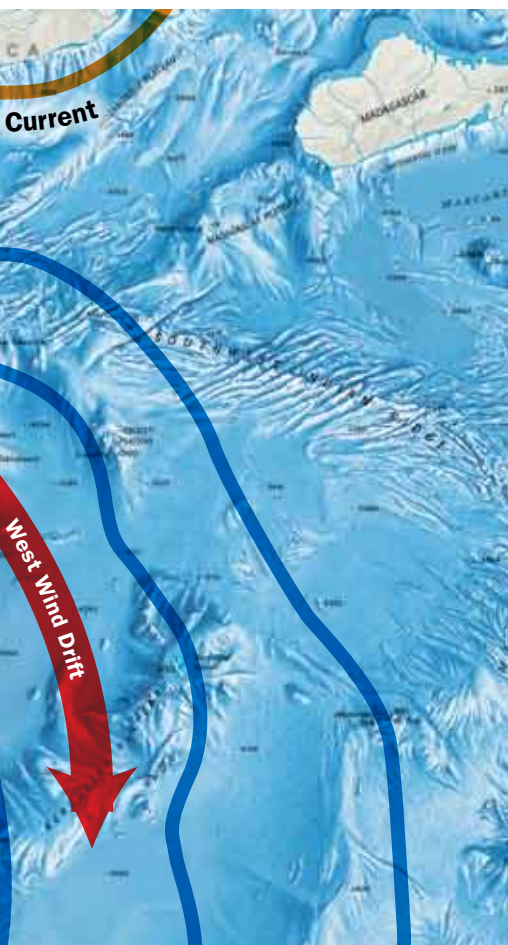
Sailing north to Tristan da Cunha, and then again on our way back to Cape Town, we will cross the Sub-Tropical Convergence where the warm waters of the South Atlantic Sub-Tropical Gyre meet the much colder and much richer waters moving north from the Southern Ocean. This provides us with a textbook example of how oceanic water masses converge, mix and interact, and one that can be best observed on the margins of the Southern Ocean, where this voyage will take us.

Finally, as we approach the South African coast we will encounter the Agulhas Current, which brings water from the Indian Ocean into the Atlantic, and which has recently been the subject of increasingly intensive study to help us understand how the different oceans on the planet interact, mix and drive global climate. All in all, the itinerary for this voyage is an extremely exciting oceanographic expedition, one that few people are fortunate enough to experience these days.

— Jim Kelley, Oceanographer



Fraser's dolphins.



» DR. JIM KELLEY WILL BE TEACHING NAVIGATION AS PART OF OUR SKILLS@SEA PROGRAM. SEE PAGE 14 FOR DETAILS.

“The outline of the Atlantic Ocean that we know today was fixed perhaps ten million years ago, and though to us and cartographers it appears to have retained its boundaries, its coastlines, and its “look” ever since the days of Columbus and Vespucci and the great German map of Martin Waldseemüller that first defined it, it has been changing, subtly and slightly, all the time. Coastlines in the east continue to advance, those in the west to retreat... The Mid-Atlantic Ridge continues to disgorge untold tonnages of new ocean floor; some of it appears above the water’s surface and creates new islands and reefs. And the islands that do exist continue to move, slowly and slightly, away from the sea’s center.”

— *The Atlantic*, Simon Winchester

CAPE HORN TO THE CAPE OF GOOD HOPE: VIA SOUTH GEORGIA, THE FALKLANDS & TRISTAN DA CUNHA TO CAPE TOWN

ITINERARY: 23 DAYS/20 NIGHTS — ABOARD NATIONAL GEOGRAPHIC EXPLORER

2012 DEPARTURE: March 5

Traverse the South Atlantic Ocean on one of the great nautical journeys

Connect South America to Africa and learn about the amazing landscapes, exotic wildlife and people who live in some of the world's most remote and beautiful places.

MAR. 5: U.S./FLY OVERNIGHT TO BUENOS AIRES, ARGENTINA

MAR. 6: BUENOS AIRES/OVERNIGHT HOTEL

On this ocean-spanning voyage, we experience two beautiful cities on opposite ends of the globe: Buenos Aires and Cape Town. Arrive today in Buenos Aires and check in to the excellent Caesar Park Hotel. Set out on a guided overview of this seductive city on the Rio de la Plata, seeing its Beaux Arts palaces, grand boulevards and the famous balcony forever associated with Eva Peron. Gather for a welcome dinner at our hotel. (L,D)

MAR. 7: FLY TO USHUAIA, ARGENTINA/EMBARK SHIP

This morning's LAN charter flight may offer rare views of Patagonia en route to Ushuaia, the world's southernmost city. Today you'll ride a catamaran through Patagonia's scenic Beagle Channel. Embark *National Geographic Explorer*. (B,L,D)



Port Stanley, Falklands

MAR. 8: AT SEA

Awake well into your journey to the Falklands, with time to settle in to shipboard life and hear talks from our staff preparing you for the exciting days ahead. (B,L,D)

MAR. 9: FALKLAND ISLANDS

The Falklands are reminiscent of Great Britain — grazing sheep, tea and crumpets — because they remain resolutely British. Get an insider's view of this isolated outpost of the United Kingdom and meet the rugged, friendly islanders who call it home. Visit the picturesque Victorian



town of Port Stanley. Hoist a couple at the local pub. And see the Anglican Cathedral with its unusual Gothic archway of whalebones. Time permitting, we'll head out of town to Gypsy Cove to see the small colony of Magellanic penguins. (B,L,D)

MAR. 10-11: AT SEA

En route to South Georgia we traverse 750 nautical miles. Stop by the Bridge to meet the officers and to keep watch for whales and seabirds. (B,L,D)

MAR. 12-14: SOUTH GEORGIA

Renowned for its beauty and vast colonies of king penguins, this is also the final resting place for the legendary polar explorer, Sir Ernest Shackleton. We make the most of our three days, keeping a flexible schedule to take advantage of the unexpected. Walk the beach, mere yards from a huge elephant seal. Paddle a kayak as curious fur seals play alongside. Hike mountain passes along Shackleton's epic route. And stand amid a sea of 300,000 king penguins! (B,L,D)



Elephant seal.

"If the astonishing sight of 300,000 king penguins in one rookery alone were all South Georgia offered; if at the end of our time among the kings — observing, listening, photographing, communing with them — someone said "Show's over, Folks" and we were all to troop home... Based on my years of leading expeditions here, I suspect no one would complain. It's that profound and rewarding an experience." — Lisa Trotter, Naturalist



Thousands of king penguins breed in colonies on South Georgia.

Venture beyond the terra firma we know

“Welcome to the Remotest Island” reads the sign on Tristan da Cunha, in many ways as rare a trophy as a photo from the summit of Everest.



“Setting foot on Tristan da Cunha was a once-in-a-lifetime experience and for me, a dream come true. To return once more on the Cape to Cape voyage is an unbelievably rare second chance on the most memorable island on Earth.”

— Andrew Evans, Contributing Editor,
National Geographic Traveler



Rockhopper penguin.

MAR. 15-18: AT SEA

“What will I do with my time at sea?” has many delightful answers with our Skills@Sea program. You’ll return home rested with new skills, new outlooks, new friends. What will you learn? Turn to pages 14-15 to find out. (B,L,D)

MAR. 19: TRISTAN DA CUNHA

Land ho! On this leg of our voyage, we encounter islands of the Mid-Atlantic Ridge, whose active volcanic cones can be seen en route. Tristan da Cunha is spectacular, quite mountainous with a subtropical climate. A far-flung outpost of the United Kingdom, the fiercely proud islanders were evacuated to England in 1961, due to a volcanic eruption — with most voting to return to Tristan. Get to know the islanders, who are proud of their international status as ‘the remotest island,’ learn firsthand about their culture and history, and discover what ‘rush hour’ is like on an island of 300 hardy souls. (B,L,D)

MAR. 20: NIGHTINGALE & INACCESSIBLE ISLANDS

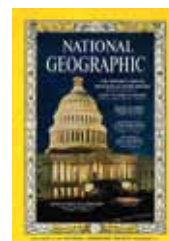
With no human inhabitants, neighboring Nightingale and Inaccessible islands are a pristine wildlife haven, where you are likely to encounter ‘Life List’ bird species, such as the rare northern rockhopper penguin and the Tristan albatross. Aptly named “Inaccessible Island,” a UNESCO World Heritage Site, is edged by sheer cliffs rising from the sea that have allowed its native species to flourish almost untouched by mankind. Discover these pristine wildernesses as you explore by Zodiac, kayak and on foot. (B,L,D)

MAR. 21-24: AT SEA

Spend these last few days relaxing at sea. Presentations on a wide array of topics are punctuated with deck time to enjoy the warmer, sunnier days of the subtropics (for “climate change” is upon us as we head towards the tropics.) Look for marine life, read in the Library, workout in the Fitness Center or have a massage in the Wellness Center. The pace and rhythm are unhurried but definitely engaging. Life at sea under these conditions is a tonic for the soul, a time to live in the moment and bask in the change from normal daily life at home. Celebrate your epic adventure at our festive farewell dinner. (B,L,D)



Opposite: Tristan da Cunha is a British territory, evidenced by this red letterbox with the Queen's coat of arms. Tristan's one and only town is called Edinburgh of the Seven Seas. Above top: A guest stops for a photo op and a panoramic view of Tristan's volcanic shoreline. Above: The unique weathervane atop St. Joseph's Catholic Church is in the shape of a whale.



"In October 1961, a volcanic eruption had forced the evacuation of Tristan's 264 inhabitants, seemingly ending their rough-hewn way of life. But after 18 unsettling months in England, amid the glitter and gadgetry of modern civilization, they had delivered an implied rebuke to the 20th century by electing to return to their harsh and timeless island."

» **READ THE FULL ARTICLE AT**
WWW.EXPEDITIONS.COM/TRISTAN



Aerial view of Cape Town and Table Mountain.

Cape Town: a seaside city of natural beauty & vibrant culture

“In Cape Town, you’re always somewhere between the mountain and the deep blue sea.”

—National Geographic Traveler



King protea, national flower of South Africa.

MAR. 25: CAPE TOWN, SOUTH AFRICA/OVERNIGHT HOTEL

An ocean away from our starting point, we arrive in beautiful Cape Town, cradled picturesquely in a natural amphitheater at the edge of the Atlantic. Ride a cable car to the top of the city’s landmark, flat-topped Table Mountain (weather permitting), and take in extraordinary panoramic views of the city, the coast and the ridge of mountains that lead to the Cape Peninsula and the Cape of Good Hope. Pay a visit to Kirstenbosch Botanical Garden and stroll among the unusual fynbos and the huge showy blossoms of protea, the national flower of South Africa. Check in to the excellent Table Bay Hotel on the Victoria & Alfred Waterfront and enjoy the rest of the day to explore on your own. (B,L)

MAR. 26-27: CAPE TOWN/FLY OVERNIGHT TO U.S./HOME

Depart Cape Town and fly home, or be our guest on a two-day Cape Region extension. (B)

Yours FREE: A sojourn in Cape Town as our guest, plus free round-trip airfare – book by December 15



COMPLIMENTARY POST-VOYAGE EXTENSION: 2 DAYS/2 NIGHTS



South Africa's Cape Region has one of the finest settings on Earth. The seaside city of Cape Town itself is backed by iconic Table Mountain. The Cape Peninsula, which juts into the Atlantic, has a mix of

great vistas, intriguing towns with art and antique shops, Cape wildlife including African penguins, and scenic Cape Point and the Cape of Good Hope at the continent's edge. The Winelands Region, justifiably famous for producing some of the best wines anywhere, is a historic region with charming Cape Dutch architecture. And it is also a beautiful one, with vineyards, a mountain pass and many great landscapes. Be our guest for two additional nights at the excellent Table Bay Hotel in Cape Town.

MAR. 26: CAPE POINT/CAPE TOWN

Travel down the Atlantic coast to explore the Cape Peninsula and Cape Point. Take the funicular or walk up to the lighthouse for views over the tip of the African continent. Visit the Cape of Good Hope before continuing up the False Bay side of the Peninsula, with possible sightings of baboon troops. Stop to view the African penguin colony at Boulders Beach. Travel through Simon's Town, Kalk Bay (with art and antique shops), and historic Muizenberg. (B,L)

MAR. 27: WINELANDS/CAPE TOWN

The storied Cape Winelands region is known for its beauty, architecture, history and especially for its outstanding wines. Stop for a cellar tour and wine tasting at the prestigious Vergelegen wine estate, with its landmark manor house dating back to 1700. Continue to Franschhoek for lunch, traveling through the well-preserved town of Stellenbosch. At Cabriere, overlooking the picturesque Franschhoek Valley, enjoy a Cap Classique and an entertaining "sabrage" (the opening of a bottle using a saber!). There's time to explore Franschhoek, with its shops and galleries, before returning to Cape Town via the Drakenstein prison, Nelson Mandela's last prison stop, and the Paarl wine area. (B,L)

MAR. 28-29: CAPE TOWN/FLY OVERNIGHT TO U.S. (B)



Above top: The Cape Winelands Region is famous for its history and architecture as well as its wines. Here an African boer house at the Vergelegen wine estate is set against misty mountains in sunset light. Above: Colorful beach huts in a row in one of the seaside towns along the Cape Peninsula.

An A+ expedition team for an exclusive voyage



Expedition Leader **TIM SOPER**, with a degree in ocean sciences, has explored every ocean and deftly manages logistics to ensure everyone is immersed in the wonders of this voyage. Historian **DAVID BARNES** will remind us of the heroic figures whose lives shaped and were shaped by the Atlantic Ocean, from early explorers Columbus, Cook and Shackleton, to whalers and slave traders. Veteran Naturalist **TOM RITCHIE** and Oceanographer **JIM KELLEY** are always inspiring and perennial guest favorites, along with Naturalist **STEVE MACLEAN**, who will add an extra level of understanding to the delightful birdlife you'll encounter. Undersea Specialist



LISA TROTTER

will share the world beneath the sea via expedition technology. Naturalists



STEPHANIE MARTIN, JASON KELLEY and **EDWARD SHAW** will be on hand to help identify the flora, fauna and many seabirds you'll see, especially at the huge king penguin colonies in South Georgia. Naturalist & Photo Instructor **DAVID COTHRAN** will help you make the most of fantastic photo ops, and **LEE BRUMLEY** will present concerts at the piano.

» FOR STAFF BIOS, VISIT WWW.EXPEDITIONS.COM/EXPERTBIOS

National Geographic Photographers



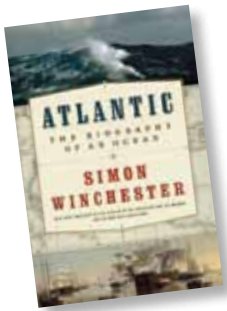
SISSE BRIMBERG and **COTTON COULSON** are contributing editors for *National Geographic Traveler* magazine and have collectively photographed more than 50 stories for *National Geographic* magazine and *National Geographic Traveler*. Both Sisse and Cotton have earned prizes from Pictures of the Year International, the National Press Photographers Association, the White House Press Photographers Association and Communication Arts. Accomplished pros and skilled tutors, they are highly qualified to provide exceptional field-learning opportunities.



Global Luminary

SIMON WINCHESTER

Best-selling author, journalist and broadcaster, Simon Winchester has worked as a foreign correspondent for most of his career and lectures widely at universities, geological and historical societies. His current book is titled *Atlantic: Great Sea Battles, Heroic Discoveries, Titanic Storms and a Vast Ocean of a Million Stories*. Winchester has authored 21 books, including the best-sellers *The Man Who Loved China*; *The Professor and the Madman*; *A Crack in the Edge of the World: America and the Great California Earthquake of 1906*; and *The Map that Changed the World*. With a degree in geology, Winchester worked as a geologist in Western Uganda before turning to journalism. His work, mainly for *The Guardian* and *The Sunday Times*, took him around the globe. Now principally an author, he also contributes to magazines, including *National Geographic* and *The Atlantic*. His awards include Britain's Journalist of the Year, and he is praised for his skills as a masterful and riveting storyteller both on the page and at the lectern.



Blending history and anecdote, geography, science and exploration, Atlantic tells the breathtaking saga of the magnificent Atlantic Ocean. When you reserve your place aboard this voyage, we'll send you a complimentary copy of your own before you depart, so you can, if you choose, discuss it with Simon while aboard.



Three kings welcome National Geographic Explorer to South Georgia.

Skills@Sea: Take advantage of time to learn new skills



“Sea time is not something to be hidden but enjoyed, as we watch the atmosphere and ocean behavior right from the deck”

— Jim Kelley, Oceanographer

NAVIGATION WORKSHOP

Do you love standing on the bridge to watch the workings of a ship? Join Dr. Jim Kelley, and our ship's Captain and Officers for a course covering the practical aspects of navigating at sea. You'll learn:

- ✓ How to read a nautical chart, understanding their many symbols
- ✓ About the magnetic compass, the gyrocompass, the meaning of the isogonic lines on the chart
- ✓ How to use a sextant to determine our position at sea
- ✓ How to interpret pilot charts to know how to use current and wind information to plot the best sea route

YOUR INSTRUCTOR: Dr. Jim Kelley. Learn more about him at www.expeditions.com/expertbios.

REQUIREMENTS: Curiosity, interest in boating.

PHOTOGRAPHY WORKSHOP

Wish you could improve your shots — of people, places, wild creatures or landscapes? Join our expert team, National Geographic Photographers Sisse Brimberg and Cotton Coulson with Lindblad-National Geographic Certified Photo Instructor David Cothran, and you will. You'll learn:

- ✓ How your camera sees the world — to get more from your current camera
- ✓ Understand the basic camera settings for shooting wildlife, landscapes, and close-ups; plus, exposures, shooting modes and composition
- ✓ How to look beyond the snapshot and be “on-assignment” — to tell stories with your images, develop the visual narrative
- ✓ Practice in the field and breakout sessions will be balanced with site-specific tutorials on deck, on hikes and during Zodiac forays and inspiring slide shows.

YOUR INSTRUCTORS: National Geographic Photographers Sisse Brimberg and Cotton Coulson (see page 12 for their bios.)

REQUIREMENTS: A camera of any type, and a desire to document your one-of-a-kind experience.



Above: There's no question that there are tremendous photo ops on this voyage. Guests of any interest or skill level, from iPhone user to pro, receive hands-on assistance in the field and at the deck rail, and share inspiring presentations.

Engaging mentors guide you to new levels



TRAVEL WRITING WORKSHOP

Do you ever wish to better express the world as you see it through words? Join *National Geographic Traveler* Contributing Editor, writer Andrew Evans and learn to capture the essence of all the places you'll explore.

Through lectures, talks and optional one-to-one tutorials, you'll learn:

- ✓ How to accomplish your personal goals as a writer – crafting personal travel essays; taking better notes on the road; journaling and blogging; writing more vivid postcards and letters; or finally focusing on the book you've always wanted to publish.



YOUR INSTRUCTOR: Andrew Evans is an accomplished travel writer and a Contributing Editor to *National Geographic Traveler*. His acclaimed blog project, *Bus 2 Antarctica*, commissioned by *National Geographic Traveler*, narrated his epic journey by bus from his home in Washington, D.C. to his cabin aboard *National Geographic Explorer* and

his exploration of his dream destination: Antarctica. A highly skilled writer and generous mentor, he will provide a relevant and valuable travel writing course. Learn more about him at www.expeditions.com/expertbios.

REQUIREMENTS: An interest in writing and a willingness to practice.

PLUS, THESE ENGAGING OPPORTUNITIES:

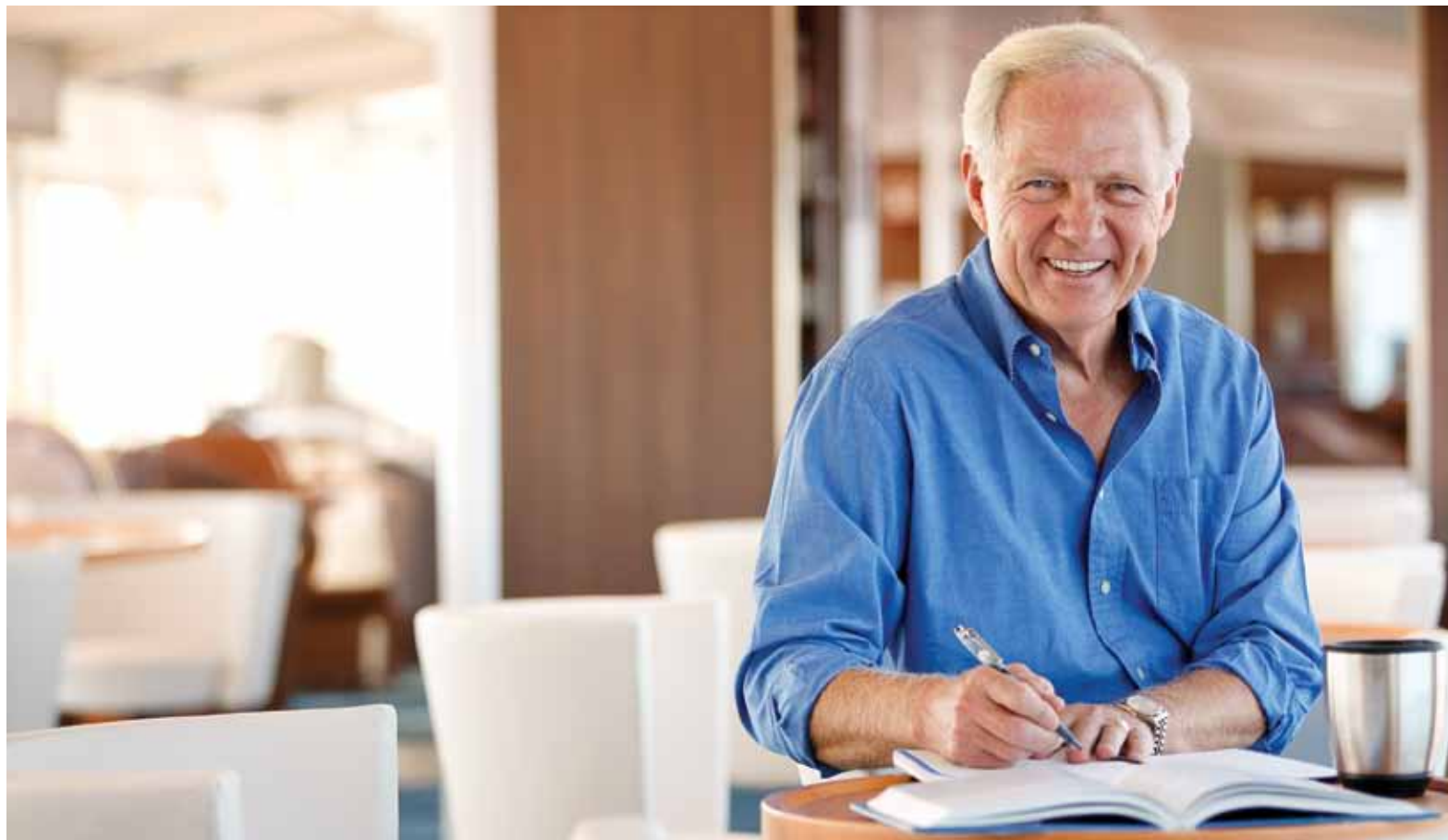
- ✓ Concerts with pianist Lee Brumley
- ✓ Cooking & baking demonstrations with *Explorer's* chef and baker
- ✓ A National Geographic GEO BEE with a total prize of \$10,000 in travel vouchers
- ✓ Revitalizing fitness options: Yoga, Pilates & stretching on deck; cardio and weights in the Fitness Center
- ✓ Enjoy your choice of a complimentary massage or wellness treatment in our Wellness Spa during your voyage



"Time at sea is a perfect writers' retreat – one that offers isolation, spare time, a good desk and a good view, along with the constant inspiration that comes from traveling to some of the world's rarest islands."

– Andrew Evans, Voyage
Writer-In-Residence





BASE CAMP AND OCEAN CAMPUS

On this voyage *National Geographic Explorer's* inviting spaces will offer their familiar comforts – and much more. The Observation Lounge and the Library will become more ‘windows on the world’ than ever – acting as classrooms, writers’ retreats or discussion forums. *Explorer's* galley will open its doors to cooking and baking demonstrations. The Lounge will be a center of constant activity – with photographers dropping in with laptops to manage their days’ photo yield, and a rich program of talks and lectures by our expedition team’s various specialists. And because the ocean is a vital constant of our days, our Undersea Specialist Lisa Trotter will show footage captured by the ROV, Splash-cam or her dives with an underwater camera, from each of our stops during the voyage. And since the ocean air is such a vital tonic for mind and body, this voyage’s menu of services will make the Wellness Center an integral part of our landscape aboard.





Top left: Benefit from on-location advice from a National Geographic Photographer. Above: Explorer's nooks & crannies are inviting places to write, manage photos and more.



A classic Swedish sauna makes the Wellness Spa a perfect place to end an active day. Massages and body treatments are the ideal counterpoint to walking, hiking and kayaking — and a perfect way to take advantage of transit time at sea.



Left: Explorer's Library, brimming with definitive guides, books, novels, and gorgeously illustrated coffee table books, is a comfortable place to read or study a topic. Above: Guests can enjoy underwater footage in the comfort of the Lounge. Our Undersea Specialist dives with a video camera or sends the ROV below the surface to capture video for playback on the large plasma screens.





THE WORLD'S ULTIMATE EXPEDITION SHIP

National Geographic Explorer

CAPACITY: 148 guests in 81 outside cabins.

REGISTRY: Bahamas. **OVERALL LENGTH:** 367 feet.

National Geographic Explorer is a state-of-the-art expedition ship, and the newest addition to the Lindblad fleet. It is a fully stabilized, ice-class 1A vessel, enabling it to navigate remote environments while providing exceptional comfort. It carries 36 kayaks and a fleet of 13 Zodiac landing craft. An Undersea Specialist operates a remotely operated vehicle (ROV) and sophisticated undersea video equipment, extending access to the underwater world.

PUBLIC AREAS: Bistro Bar; Chart Room; Restaurant; Global Gallery; Library, Lounge with full service bar, piano and state-of-the-art facilities for films, slideshows and presentations; Mud Room with lockers for expedition gear, and Observation Lounge. Our "Open Bridge" provides guests an opportunity to meet our Officers and Captain and learn about navigation.

MEALS: Served in single seatings with unassigned tables for an informal atmosphere and easy mingling. Menu is international.

CABINS: All cabins face outside with windows or portholes, private facilities and climate controls. Some cabins have balconies.

EXPEDITION EQUIPMENT: Zodiac landing craft, kayaks, Remotely Operated Vehicle (ROV), hydrophone, SplashCam, underwater video camera, Crow's Nest remote controlled camera, video microscope.

SPECIAL FEATURES: A full-time doctor, Undersea Specialist, LEX Photo Specialist and Video Chronicler, Internet café and laundry.

WELLNESS: The vessel is staffed by a Wellness Specialist and features a glass-enclosed Fitness Center, outdoor stretching area, two LEXspa treatment rooms and Sauna.

CATEGORY 1: Main Deck with one or two Portholes
#301-308

CATEGORY 2: Main Deck with Window #317-320, 335-336

CATEGORY 3: Main Deck with Window #313-316, 321-328, 337-340, 342, 344, 346, 348, 350

CATEGORY 4: Upper and Veranda Decks with Window #103-104, 107-108, 201-202, 204-207, 210, 212, 217, 226, 228

CATEGORY 5: Upper Deck with Balcony #209, 211, 214, 216, 218, 220-222, 224

CATEGORY 6: Veranda Deck-Suite #101-102; Upper Deck-Suite with Balcony #213

CATEGORY 7: Upper Deck-Suite with Balcony #215, 219, 230

CATEGORY 2 SOLO: Main Deck with Window #309-312, 329-334

CATEGORY 3 SOLO: Upper and Veranda Decks with Window #105-106, 203, 208

CATEGORY 3 TRIPLE: Main Deck with Window #341, 343

SHARED ACCOMMODATIONS: Available in Categories 1 and 2.

NOTE: Cabins #209, 211, 214, 216-218, 220, 222, 224, 226, 228, 303-306 – These cabins have one queen-sized bed. All other double cabins have two lower single beds; some can convert to a queen-sized bed. Note: Sole occupancy cabins available in Categories 2 and 3. Third person rates are available in the designated triple occupancy cabins at one-half the double occupancy rate.

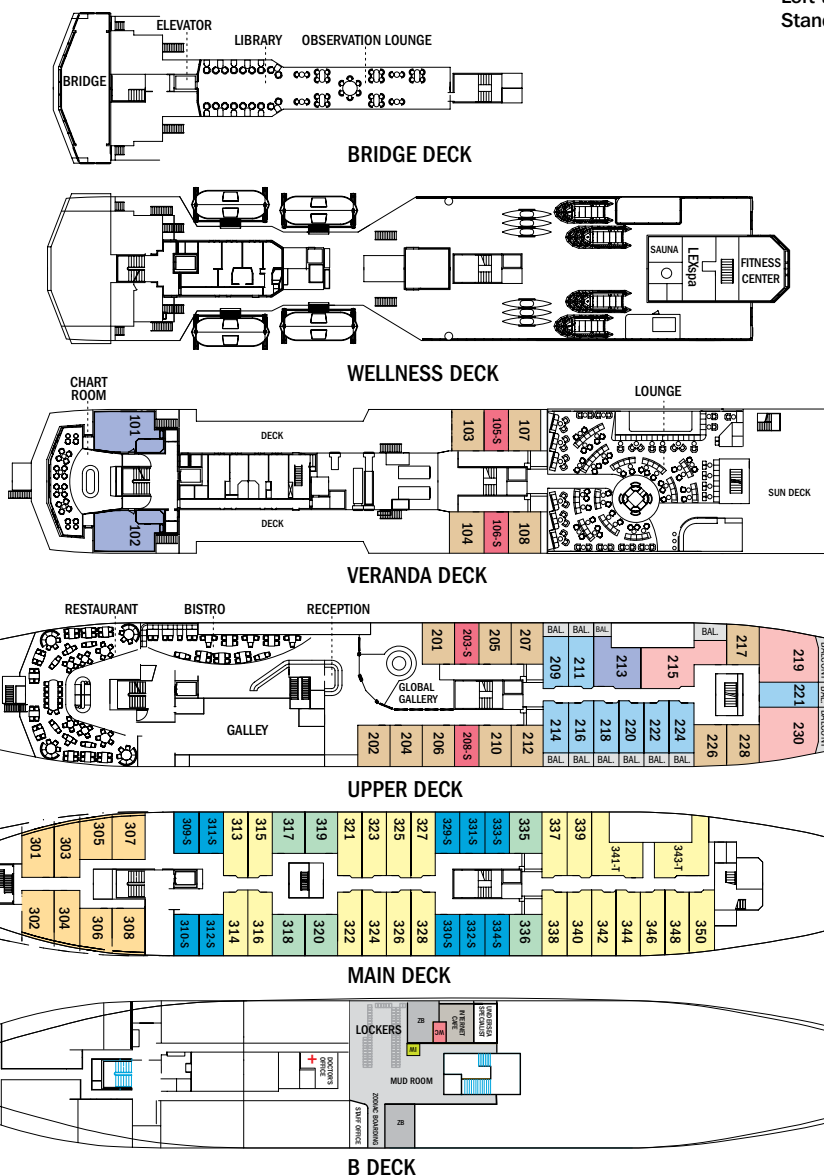
» TO VIEW A VIDEO TOUR OF NATIONAL GEOGRAPHIC EXPLORER, VISIT WWW.EXPEDITIONS.COM/NGEXPLORER

Prices are per person, double occupancy unless indicated as solo.

ITINERARY	YEAR	CAT. 1	CAT. 2	CAT. 3	CAT. 4	CAT. 5
Cape Horn to the Cape of Good Hope	2012	\$11,690	\$12,380	\$12,990	\$13,590	\$15,690



Left to right: Example of a Main Deck cabin with window; Standard bathroom; relaxing on deck.



Spacious solo cabins available on all guest decks.



Head Waiter Gaylord welcomes you to the Dining Room. Dining is a varied daily experience: completely casual, with no assigned seating for easy mingling. Breakfast and lunch are buffet-style, with an array of options. Dinner is served and always visually pleasing and delicious.

BOOK BY DECEMBER 15 FOR SPECIAL SAVINGS. FOR DETAILS, SEE NEXT PAGE.

CAT. 6	CAT. 7	CAT. 2 SOLO	CAT. 3 SOLO	ADVANCE PAYMENT	NOTE
\$18,690	\$20,790	\$15,480	\$16,290	\$1,000	Includes two hotel nights. Immigration/visa fees are not included. Sample Airfares: Miami/Buenos Aires, Cape Town/New York: Economy from \$3,200; Business from \$10,250. Charter Airfare: \$295 (one-way Buenos Aires/Ushuaia).

Take advantage of our special offers

BOOK BY DECEMBER 15 to receive a complimentary 2-day stay in Cape Town, plus receive complimentary airfare. Airfare based on economy group flights Miami/Buenos Aires, Cape Town/New York and must be ticketed by Lindblad Expeditions. In the case that group flights are not available at time of booking, we reserve the right to issue an air credit. Valid for new bookings only; not combinable with other offers. Call for details.

BRINGING A GROUP: For your party of eight people or more, you will each receive 5% off the cost of your expedition. A deposit of 10% of the trip cost is required at the time of reservation, and an additional 25% is required 120 days in advance. Final payment is

due 90 days in advance. (Excludes extension and airfare.) Note: If taking advantage of this discount, a variation of the cancellation policy will apply. Please ask upon making your reservation.

BRINGING THE KIDS: We believe sharing an expedition with your kids or grandkids is a life-enhancing experience. So, take \$500 off the double occupancy rate for each person under 18.

OUR POLICY ON COMBINING OFFERS: If the expedition that interests you provides more than one savings opportunity (e.g. it is eligible for group and Kids savings), we won't make you choose between them — you may combine up to two offers from any of the applicable savings offers, unless indicated otherwise.

A special note for independent travelers



If you've traveled with us, you know how uniquely welcoming the expedition community is aboard our ships. And you may also know that our solo traveler rate (these rates are a reality of travel economics for all companies) is one of the fairest in the industry. This and several other reasons make *National Geographic Explorer* particularly welcoming to solo travelers. *Explorer* graciously accommodates those who prefer a cabin of their own. She has a good number of sole occupancy cabins, 14 in fact.

And we offer a "Share Guarantee." If you are a solo guest willing to share accommodations, Lindblad is happy to make arrangements to match you with another solo guest so you can travel at the double occupancy rate. If you are willing and we are unable to make shared arrangements for you, we will guarantee you the per-person double occupancy rate, and you will not pay the higher solo rate.

Inclusive pricing means no extra charges

On our expeditions, you won't miss out on anything, because everything that is part of your voyage is included in the price. The only thing not included are items of a personal nature — alcohol, internet usage, tips to the crew, wellness treatments and other special arrangements.

» JOIN US ONLINE

twitter

OUR DAILY
BLOG

facebook

YouTube

Reservation Information

Costs Include: All accommodations aboard ship, all meals and nonalcoholic beverages aboard ship, meals on land as indicated, shore excursions, sightseeing and entrance fees, special access permits, transfers to and from group flights, use of kayaks, tips (except to ship's crew), taxes and service charges, services of a ship physician and services of our expedition staff.

Not Included: Air transportation, extensions, passport, visa, immigration fees, meals not indicated, baggage/accident/travel protection plan, items of a personal nature, such as alcoholic beverages, e-mail, voyage DVD, laundry. Gratuities to ship's crew at your discretion.

Airfare: For all programs, airfare is an additional cost unless otherwise indicated. Sample airfares are subject to change. We will gladly assist in making your air arrangements. There will be a \$50 per person service fee if you elect for Lindblad Expeditions to handle your air arrangements.

Note: Complete pre-journey information, including suggestions on what to bring and recommended reading, will be sent prior to departure.

TERMS & CONDITIONS

Reservations: To reserve your place, an advance payment of \$1,000 is required at the time of reservation and is payable by Visa, MasterCard, American Express, Discover or check.

Final Payment: Due 90 days prior to departure.

Travel Protection Plan: Travel protection and medical insurance are available at extra cost. Ask about our comprehensive guest travel protection plan for a worry-free expedition.

Smoking Policy: Smoking is allowed only in designated outdoor areas.

Responsibility and Other Terms & Conditions: Certain other provisions concerning, among other things, limitations of Lindblad Expeditions' and the National Geographic Society's liability for loss of property, injury, illness or death during the voyage will be provided to all guests on the ship's ticket sent prior to departure, and are also available on our web site at www.expeditions.com/terms, or upon request. By registering for a trip, the guest agrees to all such terms and conditions.

Note: Itineraries and prices listed in this brochure are as of publication date, and are subject to change. The company reserves the right to impose surcharges based on increases in the company's actual cost of fuel.

CANCELLATION POLICY

For Expeditions 8 Nights or Less

Number of Days Prior to Expedition Start	Per Person Cancellation Fee
90 or more days	\$150*
89-60 days	Advance payment cost
59-30 days	50% of trip cost
29-0 days	No refund

For Expeditions 9 Nights or More

Number of Days Prior to Expedition Start	Per Person Cancellation Fee
120 or more days	\$150*
119-90 days	Advance payment cost
89-60 days	25% of trip cost
59-30 days	50% of trip cost
29-0 days	No refund

This policy applies to expeditions. We strongly recommend that you purchase a travel protection plan. Cancellation policy may differ for extensions. Please call for details.

**You will be issued a \$150 Lindblad Expeditions Travel Certificate.*

Note: A variation of this policy applies to a party of eight people or more. Ask for details.

Lindblad Expeditions, as an Active Member of the United States Tour Operators



Association ("USTOA"), is required to post \$1 Million with USTOA to be used to reimburse, in accordance with the terms and conditions of the USTOA Travelers Assistance Program, the advance payments of Lindblad Expeditions customers in the unlikely event of Lindblad Expeditions bankruptcy, insolvency or cessation of business. Complete details of the USTOA Travelers Assistance Program may be obtained by writing to USTOA at 275 Madison Avenue, Suite 2014, NY, NY 10016, or by e-mail to information@ustoa.com or by visiting their website at www.USTOA.com.

©2011 Lindblad Expeditions

Lindblad Expeditions and the Eye are the trademarks of Lindblad Expeditions. All rights reserved.

NATIONAL GEOGRAPHIC and the Yellow Border are the trademarks of the National Geographic Society. All rights reserved.

Photo Credits: Alamy, Alexandra C. Daley-Clark, Sisse Brimberg & Cotton Coulson, Stewart Cohen, Ralph Lee Hopkins, Brent Houston, Frans Lanting, Michael Luppino, National Geographic Society/Cartography, Michael S. Nolan, Kevin Schafer, Shutterstock, Rikki Swenson, Superstock.

Recent Honors and Awards

- > Travel + Leisure "World's Best" Award for Small-Ship Cruise Lines, 2011, 2010, 2009, 2008
 - > Travel + Leisure "World's Best for Families" Award for Small-Ship Cruise Lines, 2011, 2010, 2009
 - > Cruise Critic Editor's Pick Awards "Best for Adventure", 2010
 - > Named "Best Adventure Cruise" by Forbes.com, 2009
 - > Climate Champion Award bestowed upon Sven Lindblad by Clean Air-Cool Planet, 2009
 - > Condé Nast Traveler "Gold List", 2009, 2008, 2007, 2006, 2005
 - > Conservation Achievement Award for Corporate Achievement from National Wildlife Federation, 2008
 - > Tourism for Tomorrow "Global Tourism Business Award", 2007
 - > Seafood Champion Award, 2007
 - > Condé Nast Traveler "Ecotourism Award", 2002
- Go to www.expeditions.com/awards for an extended list.**

We are proud to be a Founding Member of Adventure Collection — a family of the world's most trusted and experienced active travel companies. Each member company of Adventure Collection is dedicated to enriching the lives of its guests and to giving back to the areas in which it travels. For more information visit www.AdventureCollection.com.

For Reservations: Contact your travel agent or Lindblad Expeditions

**1.800.EXPEDITION
(1.800.397.3348)**

Reservation Hours:

Monday – Friday 9am – 8pm ET

Saturday & Sunday 10am – 5pm ET

Lindblad Expeditions, Inc.

96 Morton Street, New York, NY 10014

Phone: 212.261.9000

Fax: 212.265.3770

e.mail: explore@expeditions.com

For additional information and

online reservations, visit us on the

Web: www.expeditions.com



96 Morton Street
New York, NY 10014

PRSRT STD
U.S. POSTAGE
PAID
LINDBLAD
EXPEDITIONS

Account Number:

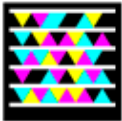
Expedition Code:

♻️ Printed on 20% recycled content paper with soy-based inks.
We recommend that you pass this along for others to enjoy or recycle.

CAC-092

1.800.EXPEDITION | WWW.EXPEDITIONS.COM

Scan with your smartphone to see a video of king penguins at sunrise on South Georgia. ➡️



**2 FREE DAYS IN CAPE TOWN, SOUTH AFRICA,
PLUS COMPLIMENTARY AIRFARE —
BOOK BY DECEMBER 15**

