



Biltmore Estate & Asheville, NC



INCREDIBLE PRICE INCLUDES:

- ◆ Motorcoach transportation
- ◆ 5 nights lodging including 3 consecutive nights in the Asheville area
- ◆ 8 meals: 5 breakfasts and 3 dinners
- ◆ GUIDED TOUR OF ASHEVILLE, NC
- ◆ Full day visit to the BILTMORE ESTATE
- ◆ GUIDED Drive along the Blue Ridge Parkway
- ◆ Visits to the famous FOLK ART CENTER and magnificent ST. LAWRENCE BASILICA
- ◆ Visit to the new Blue Ridge Parkway Visitor Center and *much more*

\$525 *

6 DAYS 5 NIGHTS

PER PERSON, DOUBLE OCCUPANCY

(Sun - Fri)

May

18 - 23, 2014

**Departure: Lowe's, 1930 Keystone Dr #2, (Peach St. Square), Upper Peach Street
Erie, PA @ 8 am**

Day 1: Depart your group's location in a spacious, video and restroom equipped motorcoach as you head for your destination: beautiful Asheville, North Carolina, nestled among the Blue Ridge Mountains! Tonight, check into an en route hotel for a good night's rest.

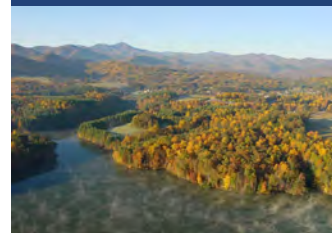
Day 2: Today after enjoying a Continental Breakfast, you will continue towards your destination. Tonight, you'll enjoy Dinner before checking into your Asheville area hotel.

Day 3: Begin the day by enjoying a Continental Breakfast, before departing for a visit to the spectacular BILTMORE ESTATE, America's largest privately owned home. Your visit will include experiencing the Biltmore House and Gardens. You will also visit the new Antler Village and Winery. This is Biltmore's new village that connects the estate's present and past, providing a relaxing place for dining, shopping, historical exhibits, and new ways to experience Biltmore's hospitality. This is a "must see" destination in America. Later, you'll enjoy Dinner with entertainment before returning to your hotel for the night.

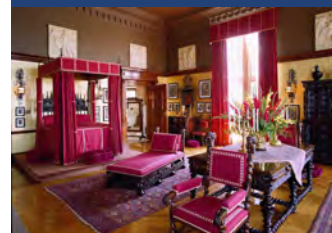
Day 4: Enjoy a Continental Breakfast before departing for a GUIDED TOUR OF ASHEVILLE. Downtown Asheville features more Art Deco architecture than any other southern city outside of Miami Beach. You will also see the magnificent ST. LAWRENCE BASILICA. This afternoon, you will go with your guide for a drive on the scenic Blue Ridge Parkway, America's most visited National Park unit and known as "America's favorite drive". You will visit the new Blue Ridge Parkway Visitor Center and see "The Blue Ridge Parkway - America's Favorite Journey", a 24-minute film shown in High Definition surround sound and using breathtaking aerial photography. Later, you will visit the famous FOLK ART CENTER. This evening, you will enjoy Dinner before returning to your hotel to relax and recall the highlights of the day.

Day 5: Enjoy a Continental Breakfast before leaving for the Tamarack Cultural Center in Beckley, WV. Known as a "Showcase of the Best of West Virginia", The Tamarack is a one-stop-shop for West Virginia culture, heritage, handcrafts, fine art, and regional cuisine. This evening, relax at your en route hotel.

Day 6: Today after enjoying a Continental Breakfast, you depart for home... A perfect time to chat with your friends about all the fun things you've done, the spectacular sights you've seen and where your next group trip will take you!



View the Blue Ridge Mountains.



Grand Victorian architecture.



New Blue Ridge Parkway Visitor Center.



One of the Biltmore's many gardens.

**\$75 Due Upon Signing. *Price per person, based on double occupancy. Add \$150 for single occupancy.
Final Payment Due: 3/11/2014**

FOR INFORMATION & RESERVATIONS CONTACT:

Kim Zboyovski @ (814) 453-5686