



PRINCESS CRUISES  
*escape completely®*

# 2013–2014 South America



December 2013 to March 2014 Cruises and Land & Sea Vacations

**Princess Cruises Captain's Circle™ Launch Savings** up to \$100 per person when you book early.

See inside front cover for details.



# Experience the best of South America

From the wild Amazon to cosmopolitan cities like Rio de Janeiro and Buenos Aires, South America offers an array of experiences. *And no one can show you the best attractions of the region like Princess® in 2013–2014!*

- A wide variety of voyages ranging in length from two weeks to 31 days on Golden Princess® and Pacific Princess®
- Explore the incredible Amazon on one of two voyages sailing between Manaus and Ft. Lauderdale on the small ship, Pacific Princess®
- Optional overnight excursions to Peru's magical Machu Picchu available on our Andes & South America and Andes & Cape Horn Grand Adventure sailings.
- Spend the holidays on any of four South America voyages from 14 to 31 days, visiting Cape Horn, the Andes, the Amazon River and other locales.



*Rio de Janeiro – Courtesy of S. Friedenberg*



Buenos Aires, Argentina

**Extra  
Savings  
for Past  
Passengers!\***

**Limited-time offer – If you've sailed with us before, just book any of these vacations to enjoy Captain's Circle Launch Savings:**

- An **extra savings** of up to \$100 per person\*
- Enjoy a **2-for-1 deposit** (just 10% of cruise fare)
- **The savings stay with you!** If you qualify for a lower fare later, your discount can be applied to that fare

\*Princess Cruises Captain's Circle Launch Savings of up to \$100 per person discount is applicable in all categories and combinable only with Original Fares, Group Fares, Regional and other past-passenger promotions. Once booked, if a lower fare which the past passenger qualifies for and requests becomes available, the discount will automatically combine with the lower fare. Specific discount amounts vary by itinerary and cruise length. New-booking-only promotions are not combinable with the discount. Princess Cruises Captain's Circle Launch Savings is not applicable to third- and fourth-berth passengers. Call 1-800-PRINCESS for details. Offer expires 12/31/12 for Fall sailings and 3/31/13 for Spring 2014 sailings. Promotion code is PAI.

The contents of this brochure are accurate as of the date of printing and are subject to change. Please refer to [princess.com](http://princess.com) for up-to-date information.





## 14 Days | Cape Horn & Strait of Magellan

Golden Princess®

**Santiago (Valparaíso)**, Puerto Montt, *Chilean Fjords scenic cruising*, Punta Arenas, *Beagle Channel scenic cruising*, Ushuaia (Tierra del Fuego), *Cape Horn scenic cruising*, Falkland Islands (Stanley), Puerto Madryn (for Punta Tombo Penguin Reserve), Montevideo, **Buenos Aires** (overnight)

### 2014 Saturday Departure Dates

**Jan 18**  
**Feb 1†**  
**Feb 15**  
**Mar 1†**

### Original Fares

Suite fares from	\$4,999*
Mini-suite fares from	\$2,999*
Balcony fares from	\$2,499*
Oceanview fares from	\$2,199*
Interior fares from	\$1,699*

An optional overland excursion to Patagonia is available between Puerto Montt and Punta Arenas.

†Itinerary operates in reverse order.

\*Princess reserves the right to impose a fuel supplement of up to \$9 per person per day on all passengers if the NYMEX oil price exceeds \$70 per barrel, even if the fare has already been paid in full. Fares based on 1/18/14 sailing. Government fees and taxes for that sailing are \$345 per person and are additional and subject to change. Government fees and taxes on other dates may vary — please refer to princess.com for more information. Other restrictions apply. See page 2 for details.



Plaza Independencia — Montevideo, Uruguay



## 14 Days | Cape Horn Route to Rio

Golden Princess®

**Rio de Janeiro**, Buenos Aires, Montevideo, Falkland Islands (Stanley), *Cape Horn scenic cruising*, Ushuaia (Tierra del Fuego), *Beagle Channel scenic cruising*, Punta Arenas, *Chilean Fjords scenic cruising*, **Santiago (Valparaíso)**

### 2013 Saturday Departure Date

**Dec 21†**

### 2014 Saturday Departure Date

**Jan 4**

### Original Fares

Suite fares from	\$4,999*
Mini-suite fares from	\$2,999*
Balcony fares from	\$2,499*
Oceanview fares from	\$2,199*
Interior fares from	\$1,699*

†Itinerary operates in reverse order. Port order may vary

\*Princess reserves the right to impose a fuel supplement of up to \$9 per person per day on all passengers if the NYMEX oil price exceeds \$70 per barrel, even if the fare has already been paid in full. Fares based on 1/4/14 sailing. Government fees and taxes for that sailing are \$365 per person and are additional and subject to change. Government fees and taxes on other dates may vary — please refer to princess.com for more information. Other restrictions apply. See page 2 for details.



## 14 Days | Amazon River

Pacific Princess®

**Ft. Lauderdale**, St. Maarten, St. Lucia, Tobago, *Devil's Island scenic cruising*, *Cross The Equator*, Santarém (Amazon River), Boca da Valéria (Amazon River), Parintins (Amazon River), **Manaus** (overnight)

### 2013 Departure Date

**Dec 23 Mon**

### 2014 Departure Date

**Jan 6† Mon**

### Original Fares

Suite fares from	\$6,499*
Mini-suite fares from	\$4,999*
Balcony fares from	\$4,199*
Oceanview fares from	\$3,549*
Interior fares from	\$3,299*

†Itinerary operates in reverse order. Port duration may vary.

\*Princess reserves the right to impose a fuel supplement of up to \$9 per person per day on all passengers if the NYMEX oil price exceeds \$70 per barrel, even if the fare has already been paid in full. Fares based on 1/6/14 sailing. Government fees and taxes for that sailing are \$285 per person and are additional and subject to change. Government fees and taxes on other dates may vary — please refer to princess.com for more information. Other restrictions apply. See page 2 for details.



## Captain's Circle Launch Savings

For a limited time, past passengers can **save up to \$100 per person** and enjoy a **2-for-1 deposit** on any cruise\*

Details on inside cover



## 31 Days | Andes & Cape Horn Grand Adventure®

Golden Princess®

**Los Angeles**, Cabo San Lucas, Nicaragua (San Juan del Sur), Costa Rica (Puntarenas), *Cross The Equator*, 2-Day Lima Experience (includes two days & overnight), San Martin, La Serena (Coquimbo), Santiago (Valparaíso), *Chilean Fjords scenic cruising*, Punta Arenas, *Beagle Channel scenic cruising*, Ushuaia (Tierra del Fuego), *Cape Horn scenic cruising*, Falkland Islands (Stanley), Buenos Aires, Montevideo, **Rio de Janeiro**

### 2013 Departure Date

Dec 4 Wed

### Original Fares

Suite fares from	\$9,499*
Mini-suite fares from	\$5,399*
Balcony fares from	\$4,599*
Oceanview fares from	\$3,999*
Interior fares from	\$3,199*

An optional overland excursion to Machu Picchu is available from Lima (Callao).

This voyage is a combination of the 12/4/13 17-day Andes & South America shown on this page and the 14-day Cape Horn & Route to Rio de Janeiro shown on page 1. \*Princess reserves the right to impose a fuel supplement of up to \$9 per person per day on all passengers if the NYMEX oil price exceeds \$70 per barrel, even if the fare has already been paid in full. Government fees and taxes are \$445 per person and are additional and subject to change. Other restrictions apply. See below for details.



## 17 Days | Andes & South America

Golden Princess®

**Los Angeles**, Cabo San Lucas, Nicaragua (San Juan del Sur), Costa Rica (Puntarenas), *Cross The Equator*, 2-Day Lima Experience (includes two days & overnight), San Martin, La Serena (Coquimbo), **Santiago (Valparaíso)**

### 2013 Departure Date

Dec 4 Wed

### Original Fares

Suite fares from	\$4,399*
Mini-suite fares from	\$2,299*
Balcony fares from	\$1,999*
Oceanview fares from	\$1,699*
Interior fares from	\$1,399*

### 2014 Departure Date

Mar 15 Sat

An optional overland excursion to Machu Picchu is available from Lima (Callao).

\*Itinerary operates in reverse order. Port duration may vary.

\*Princess reserves the right to impose a fuel supplement of up to \$9 per person per day on all passengers if the NYMEX oil price exceeds \$70 per barrel, even if the fare has already been paid in full. Fares based on 3/15/14 sailing. Government fees and taxes for that sailing are \$170 per person and are additional and subject to change. Government fees and taxes on other dates may vary — please refer to princess.com for more information. Other restrictions apply. See left for details.



## 31 Days | Andes & Cape Horn Grand Adventure®

Golden Princess®

**Buenos Aires** (overnight), Montevideo, Puerto Madryn (for Punta Tombo Penguin Reserve), Falkland Islands (Stanley), *Cape Horn scenic cruising*, Ushuaia (Tierra del Fuego), *Beagle Channel scenic cruising*, Punta Arenas, *Chilean Fjords scenic cruising*, Puerto Montt, Santiago (Valparaíso), La Serena (Coquimbo), San Martin, 2-Day Lima Experience (includes two days & overnight), *Cross The Equator*, Costa Rica (Puntarenas), Nicaragua (San Juan del Sur), Cabo San Lucas, **Los Angeles**

### 2014 Departure Date

Mar 1 Sat

### Original Fares

Suite fares from	\$9,299*
Mini-suite fares from	\$5,199*
Balcony fares from	\$4,399*
Oceanview fares from	\$3,799*
Interior fares from	\$2,999*

An optional overland excursion to Machu Picchu is available from Lima (Callao).

This voyage is a combination of the 3/15/14 17-day Andes & South America shown on this page and the 3/1/14 14-day Cape Horn & Strait of Magellan shown on page 1.

\*Princess reserves the right to impose a fuel supplement of up to \$9 per person per day on all passengers if the NYMEX oil price exceeds \$70 per barrel, even if the fare has already been paid in full. Government fees and taxes are \$475 per person and are additional and subject to change. Other restrictions apply. See below for details.



Plaza de Armas — Lima, Peru

\*Lead-in fares are based on the lowest category stateroom for each category type. Fares for oceanview staterooms offer a non-obstructed view. Original fares represent the lead-in introductory fares and are subject to change. Original fares and other amounts shown are in U.S. dollars unless stated otherwise; are available in North America only. Rates shown are per person, cruise or cruisetour only, based on double occupancy and do not apply to singles or third- and fourth-berth passengers; contact Princess Cruises for third- and fourth-berth passenger fares.

The offer is based on space availability, is capacity controlled and applies to the sailing dates and stateroom categories shown on each itinerary. Fares may remain at a discounted level after this promotion. See princess.com for terms, conditions and definitions that apply to all bookings.





# Land & Sea Vacations



## Cruisetour 5 Iguazú Falls Experience 18 nights

Golden Princess®

2 nights Rio de Janeiro, 2 nights Iguazú Falls / 14-day Cape Horn Route to Rio cruise

### 2013 Departure Dates

Date	Cruisetour
Dec 21†	5B
Dec 31	5A

### Original Fares

Suite fares from	\$8,299*
Mini-suite fares from	\$6,299*
Balcony fares from	\$5,499*
Oceanview fares from	\$5,199*
Interior fares from	\$4,999*

**Cruisetours 5A/5B** Includes 14-day Cape Horn Route to Rio cruise shown on pg. 1  
†Itinerary operates in reverse order; land tour after cruise.

\*Princess reserves the right to impose a fuel supplement of up to \$9 per person per day on all passengers if the NYMEX oil price exceeds \$70 per barrel, even if the fare has already been paid in full. Fares based on 12/21/13 departure. Government fees and taxes for that departure are \$365 per person and are additional and subject to change. Government fees and taxes on other dates may vary — please refer to princess.com for more information. Other restrictions apply. See page 2 for details.



## Cruisetour 6 Iguazú Falls Adventure 19 nights

Golden Princess®

2 nights Rio de Janeiro, 2 nights Iguazú Falls, 1 night Buenos Aires / 14-day Cape Horn & Strait of Magellan cruise

### 2014 Departure Dates

Date	Cruisetour
Jan 18†	6B
Jan 27	6A
Feb 15†	6B
Feb 24	6A

### Original Fares

Suite fares from	\$8,499*
Mini-suite fares from	\$6,499*
Balcony fares from	\$5,999*
Oceanview fares from	\$5,399*
Interior fares from	\$5,199*

**Cruisetours 6A/6B** Includes 14-day Cape Horn & Strait of Magellan cruise shown on pg. 1

†Itinerary operates in reverse order; land tour after cruise.

\*Princess reserves the right to impose a fuel supplement of up to \$9 per person per day on all passengers if the NYMEX oil price exceeds \$70 per barrel, even if the fare has already been paid in full. Fares based on 1/18/14 departure. Government fees and taxes for that departure are \$365 per person and are additional and subject to change. Government fees and taxes on other dates may vary — please refer to princess.com for more information. Other restrictions apply. See page 2 for details.



## Cruisetour 7 Machu Picchu 20 or 23 nights

Golden Princess®

1 night Lima, 2 nights Sacred Valley, 1 night Machu Picchu, 1 night Cusco, 1 night Santiago / 14-day Cape Horn Route to Rio cruise or 14-day Cape Horn & Strait of Magellan cruise or 17-day Andes & South America cruise

### 2013 Departure Dates

Date	Cruisetour
Dec 4†	7B (23 nights)
Dec 15	7A

### Original Fares

Suite fares from	\$7,899*
Mini-suite fares from	\$5,499*
Balcony fares from	\$5,199*
Oceanview fares from	\$4,899*
Interior fares from	\$4,599*

### 2014 Departure Dates

Date	Cruisetour
Jan 4†	7C
Jan 12	7A
Feb 1†	7D
Feb 9	7A
Mar 1†	7D
Mar 9	7B (23 nights)

**Cruisetours 7A/7D** Includes 14-day Cape Horn & Strait of Magellan cruise shown on pg. 1

**Cruisetours 7B** Includes 17-day Andes & South America cruise shown on pg. 2

**Cruisetours 7C** Includes 14-day Cape Horn Route to Rio cruise shown on pg. 1

†Itinerary operates in reverse order; land tour after cruise. One night in Lima replaces one night in Santiago.

\*Princess reserves the right to impose a fuel supplement of up to \$9 per person per day on all passengers if the NYMEX oil price exceeds \$70 per barrel, even if the fare has already been paid in full. Fares based on 12/4/13 departure. Government fees and taxes for that departure are \$365 per person and are additional and subject to change. Government fees and taxes on other dates may vary — please refer to princess.com for more information. Other restrictions apply. See page 2 for details.



Iguazú Falls, Brazil

# Experience more with a shore excursion

From exploring ancient Incan ruins to learning to dance the tango, Princess shore excursions bring you everything you want to see and do in each South American port you visit. These are just a sampling of shore excursions being offered. For more information and a thorough listing, please contact your travel agent or visit [princess.com](http://princess.com).

## Activities & Adventures

### **Punta Arenas:** Patagonia Trek & Andean Club

Travel to Punta Arenas' premier ski club, ride a chair lift up the slopes, then hike down the mountain with your guide. This half-day tour also treats you to stunning views of the Strait of Magellan.

### **Rio de Janeiro:** The Rio Jeep Tour

Travel through the lush green Tijuca Forest and National Park in military-style 4WD vehicles, and explore the world's largest urban forest, covering some 8,000 acres.

### **Ushuaia:** Tierra Mayor Natural Trek

Travel to the Tierra Mayor Natural Reserve and trek with your guide through an old-growth lenga forest. Enjoy the sights of beaver dams and peat bogs on your way to the Five Cascades waterfalls.

## Nature & Wildlife

### **Costa Rica:** Rainforest Aerial Tram, Tarcoles River & Lunch

Experience Costa Rica's lush rainforest canopy up-close on a breath-taking open-air gondola ride, followed by a jungle cruise along the magnificent Tarcoles River, home to Central America's largest crocodile colony.

### **Falkland Islands:** Bluff Cove Penguin Rookery

Marvel at the 1,000 pairs of gentoo penguins and the growing king penguin colony at the famed rookery in Bluff Cove.



Costa Rican wildlife



Hiking in Punta Arenas, Chile

### **Manaus:** Flooded Forest & Alligator Sighting by Night

As night falls, cruise upriver to explore the flooded rainforest tributaries in search of the Amazon's wild alligators.

### **Punta Arenas:** Antarctica Landing Expedition

Fly to the icy southern continent of Antarctica for a full-day excursion to one of its oldest meteorological stations. View the area's glaciers, landscape and wildlife on a guided hike.



Amazon alligator

### **Santarém:** Santarém River Cruise

Cruise the Amazon to witness a natural phenomenon, the "meeting of the waters" at the confluence of the emerald waters of the Rio Tapajos and the mighty muddy waters of the Amazon River, and visit Maica Lake, home to the elusive freshwater dolphin.





## Sightseeing & City Tours

### **Buenos Aires:** Recoleta Cemetery, Countryside & Estancia

Explore Buenos Aires, the capital of Argentina, and visit the historic La Recoleta Cemetery where Evita Peron is buried. Then travel to the Pampas to visit a working cattle ranch, or “estancia” for a barbecue and music show.

### **La Serena:** Pisco Distillery & Elqui Valley

Explore scenic Elqui Valley to Vicuña, hometown of Nobel Laureate Gabriela Mistral. See captivating beaches and landmarks in Coquimbo and La Serena, a Pisco distillery tour and tasting, and shopping at La Ricova Market.

### **Lima:** The Gold Museum

Find a king's ransom in gold at Lima's famed Gold Museum and discover the ancient Inca culture along the way! You'll also visit the equally fascinating Weapons Museum.

### **Manaus:** Rubber Museum & Indian Community

Take a regional river boat up the Rio Negro to visit the Native community of Tupé, where you'll be treated to a reception that includes rituals performed by the shaman (priest) and the tribe.

### **Puerto Montt:** Alerce Mountain Lodge & Forest Hike

A remote mountain lodge makes the perfect base for a nature hike through the Alerce Forest, home to gnarled, silvery trees that are millennia old.

### **Punta Arenas:** Patagonia Institute, Museum & Fort Bulnes

Experience Punta Arenas on a full-day, narrated drive that includes the Maggiorino Borgatello Museum housed in a 19th-century mansion, and the Patagonia Institute for a flashback into pioneering days.



Rio de Janeiro, Brazil

### **Rio de Janeiro:** Christ the Redeemer Statue

Experience the sights and sounds of Brazil's Cidade Maravilhosa. Travel through the lush green Tijuca Rainforest via train to the summit of Corcovado Mountain to visit the iconic statue of Christ the Redeemer and take in the views.

## Special Interests

### **Buenos Aires:** Tango Show & City Drive

Enjoy a scenic drive highlighting important city landmarks with walking tours of the La Boca district and the Recoleta Cemetery plus lunch and a colorful performance of Argentine tango.



Ushuaia

### **La Serena:** City Drive & Archaeological Museum

View the old lighthouse and the historic Plaza de Armas, tour the Archeological Museum with its pre-Columbian artifacts, take photos at La Herradura Beach and shop for souvenirs at the La Recova Market.

### **Lima:** Pachacamac Ruins & Peruvian Prancing Horses

Visit the Pachacamac Ruins, an ancient pilgrimage center, with a performance by the magnificent Peruvian prancing horses. And you'll visit the Museum of Anthropology and Archaeology.

### **Montevideo:** Steam Train, Juanico Winery & Wine Tasting

Travel by historic steam train on this full-day tour to Establacimientto Juanico to learn the art of wine-making, indulge in a wine tasting, enjoy a delicious barbecue lunch and shop for wine.

### **Rio de Janeiro:** Petropolis

Step back into the 19th century on a visit to Petropolis, the mountain retreat of Brazil's last emperor. Tour the old Imperial Palace and view the imperial crown jewels, and later enjoy a churrascaria barbecue lunch.

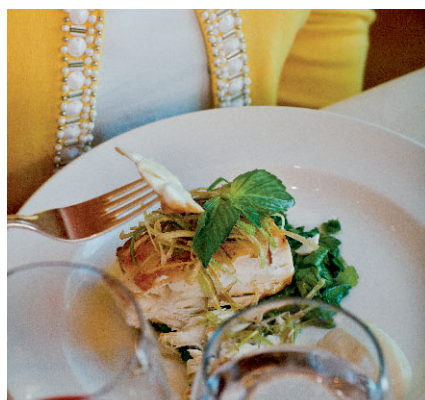
### **Ushuaia:** Drive to the “End of the World”

A drive through Tierra del Fuego National Park brings you to the end of the world's longest stretch of road, the Pan American Highway. Along the way, visit Ensenada Bay, Roca Lake, and Lapataia Bay.



# A relaxing world awaits you

There's nothing quite like unpacking and unwinding on the relaxed, rejuvenating retreat of a Princess ship. You'll find yourself transported far from your everyday routine as you bask in warm, welcoming service, savor delicious cuisine made from scratch and enjoy the array of incredible activity and entertainment options available day and night. Let the Consummate Host® take you away to the world's best destinations.



**Princess cuisine** is made with care by our experienced chefs. Each dish served in venues throughout the ship pairs creative preparations with the freshest ingredients.



**Movies Under the Stars®**, a Princess original, features films, concerts, live sporting events and more, poolside on a giant outdoor screen. Get yourself a lounge chair, blanket and some complimentary popcorn, and enjoy the show.



**The Sanctuary** a blissful on-deck oasis just for adults, offers massages, attentive service, portable media players, signature beverages and spa fare.



**Boutiques** Browse amidst the array of brand-name wares in the Princess boutiques, or purchase a special Princess souvenir to remind you of your vacation back home.



**Princess Theater** Head to the theater for lavish original Princess musical productions each evening, including our newest show, "British Invasion."



**Anytime Dining™**, a Princess original, lets you decide - perhaps dining early with a table for two one evening, and late with new friends the next. Or choose **Traditional Dining** and sit at the same table with the same fellow passengers and server each night.



For more information visit: [princess.com/activities](https://princess.com/activities)



# Choose from a variety of stateroom options

Whatever your preference and budget, you'll find the perfect stateroom on your Princess® ship. Ranging from spacious suites to comfortable interiors, here's an overview of the stateroom options available.

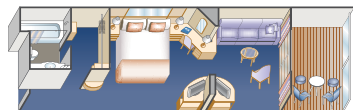


## Suite with balcony

A spacious suite with balcony includes all the amenities of a mini-suite, plus incredible premiums.

These include luxury balcony

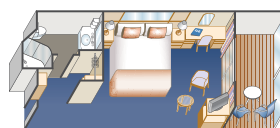
furniture, deluxe canapés, fresh flowers, DVD/CD player, free access to a DVD library, two flat-panel TVs, one complimentary mini-bar setup, upgraded bathroom amenities, laundry and professional cleaning services. Plus, suite passengers can enjoy a complimentary dinner in one of our specialty restaurants on disembarkation day. Approximately 460 to 932 square feet, including balcony. Window suites are also available as a more affordable option.



## Mini-suite with balcony

A mini-suite with balcony is substantially larger than a balcony stateroom.

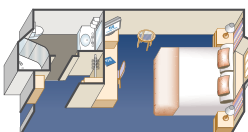
It includes all the amenities of a balcony stateroom and these added luxuries: welcome glass of champagne, separate sitting area, sofa bed, luxury mattress and pillows, two flat-panel TVs, a spacious closet, desk, bathroom tub and massage shower head. Approximately 323 square feet, including balcony.



## Balcony

This impressive stateroom offers the elegance of a balcony with fine patio

furniture. Other amenities include a spacious closet, desk and a bathroom with shower. Approximately 214 to 279 square feet, including balcony.

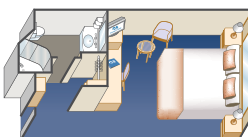


## Oceanview double

Our oceanview stateroom includes all the amenities of an interior double, plus it features a picture window, providing added ambience and

memorable views. Approximately 146 to 206 square feet. Deluxe oceanview, a larger version of the oceanview double is also available on select ships.

Note: Some categories have portholes versus picture windows. Some staterooms are partially to fully obstructed, as shown on deck plans.



## Interior double

Our interior stateroom is a great value. It features two twin beds that make up into a queen-size bed. Other amenities

include a refrigerator, hair dryer, TV, closet and bathroom with shower. Approximately 158 to 162 square feet.

Note: Floor plans, amenities and stateroom diagrams represent typical arrangements and may vary by ship. Certain stateroom categories may vary in size and configuration by ship. Square footage varies based on stateroom category and deck location. Stateroom views are considered unobstructed unless noted otherwise. Obstructions do not include certain nautical items like handrails, dividers or ship hardware. For balcony staterooms, the view is determined from the perspective of the balcony railing. Balconies may have either solid steel or glass railings. Upper berth and bed ladder capacities are 250 lbs. Staterooms that can accommodate rollaways have two lower berths, one upper berth and can accommodate a fourth berth as a rollaway bed upon request at time of reservation. There are a limited number of rollaway beds per ship, per voyage. Use of rollaway beds restricts cabin space. Call 1-800-PRINCESS for more information.

# The Princess® fleet in South America

From our largest ships to our most intimate small vessels, Princess provides a variety of ways to see South America exactly the way you want to. Whichever ship you sail upon, you'll enjoy the same attentive Princess service and a wide selection of activities, entertainment and dining options.



Atrium



Sabatini's<sup>SM</sup>



Golden Princess®

## Golden Princess®

2,590 passengers | Over 700 balconies

- The Piazza
- The Sanctuary (onboard oasis for adults)
- Movies Under the Stars® (poolside theater)
- Sabatini's™ (Italian specialty restaurant)
- Crown Grill™ (Steak and seafood specialty restaurant)
- Vines (wine, sushi, and tapas bar)
- Four freshwater pools
- Casino
- Original production shows
- ScholarShip@Sea® courses
- Gym & fitness center
- Art auctions
- Duty-free shopping

**Length:** 950 ft.

**Gross Tonnage:** 108,865

Note: Specific venues may vary by ship and are subject to change.



Pacific Princess®

## Pacific Princess®

680 passengers | Over 200 balconies

- Classic Traditional Dining
- Sabatini's™ (Italian specialty restaurant)
- Sterling Steakhouse™ (specialty restaurant)
- Bars & lounges
- Patisserie
- Freshwater pool
- Casino
- Original production shows
- ScholarShip@Sea® courses
- Gym & fitness center
- Art auctions
- Duty-free shopping

**Length:** 592 ft.

**Gross Tonnage:** 30,277



Learn more about our ships: [princess.com/ships](https://princess.com/ships)



# How to plan your cruise in 10 easy steps

There's a lot to consider when planning a cruise with Princess.

But with this simple planning guide, you'll be on your way in no time!

And should you have more specific questions, feel free to contact your travel agent or visit [princess.com](http://princess.com).



## 1 What kind of cruise vacation are you seeking?

Princess has options to match every individual taste and style. Are you a person who enjoys the thrill of visiting many ports and a variety of sights? Or do you prefer voyages with more time out at sea to relax and unwind?

## 2 Where and when do you want to go?

Princess sails all around the world, 12 months a year. Use the chart below to help you plan where and when you want to cruise with Princess.

2013 Princess Destinations

Destinations	Travel Months
Alaska	May to Sep
Asia & Africa	Apr to Mar
Australia, New Zealand	Oct to May
Canada & New England	Sep to Oct
Caribbean	Oct to Apr
Europe	Apr to Dec
Mexico, Hawaii & California Coastals	Sep to May
Panama Canal	Sep to May
South America	Dec to Mar
Tahiti & South Pacific	Sep to Apr

## 3 How do you choose the itinerary that's best for you?

First, how much time do you have and how long would you like your vacation to be? Princess has options from a week to over a month. What places and experiences are on your travel bucket list? Imagine how and where you want to escape completely. Then find an itinerary to match.

## 4 What's your budget?

Your cruise fare is determined by several factors — destination and length, time of year, stateroom choice, and availability. Stateroom fares are quoted per person and based on double occupancy — with elegant and casual dining options, onboard

entertainment like production shows, musicians and comedians, a Las Vegas-style casino, and much more included with your fare.

## 5 Do you have a preference of ship?

Princess has everything from grand ships carrying over 3,000 passengers to smaller, more intimate vessels accommodating just 680. Ask your travel agent for more details, or visit [princess.com/ships](http://princess.com/ships) to learn more about each of our ships, or take a virtual tour of their public areas.

## 6 What sort of stateroom best fits your needs?

Princess has a wide variety of staterooms from which to choose, each including a range of amenities from flat-screen TVs and a refrigerator to a spacious closet and private bathrooms. Balcony staterooms give you added space and your own place to relax outside on fine patio furniture and enjoy the unforgettable views. Suites and mini-suites offer even more square footage and premiums such as a sofa bed and upgraded amenities including luxury mattress and pillows. An oceanview double include a large picture window providing added ambience and memorable views, and our most affordable option is the interior stateroom, which has fine amenities and no windows. To learn more, visit [princess.com/staterooms](http://princess.com/staterooms).

## 7 Are you traveling with kids, friends or family?

Traveling with family or a group of friends can be a wonderful way to escape completely. Be sure to book early for the best selection of staterooms. Be sure to inquire to have your group's staterooms close to one another. For those sailing with kids, our free onboard youth and teen programs are excellent, and family-friendly shore excursions are available.

## 8 Do you need help booking air, hotel or transfers?

Princess can assist you with travel logistics not included in your fare, such as air, hotel and transfers to and from your ship to your airport or hotel. Princess eZAir® is a convenient and easy planning tool from Princess that offers competitive fares and Next-Port Protection, getting you onboard at the next available port in the event you miss your embarkation. And our Cruise Plus® Hotel program offers peace of mind and convenience, with excellent centrally located hotels before or after your voyage. To learn more about Princess eZAir, our Cruise Plus Hotel program and transfer options available, ask your travel agent or visit [princess.com](http://princess.com).

## 9 What kinds of shore excursions most interest you?

From sightseeing and nature tours to off the beaten path adventures and more, you can experience the best of every destination with a Princess Cruises shore excursion. And it is easy for you to choose the right tour, with excursions categorized by interest and activity level. Pre-reserve your shore excursions for the best selection and availability. Contact your travel agent or visit [princess.com/excursions](http://princess.com/excursions) to learn more.

## 10 What if you need to cancel?

It is important to note there are restrictions regarding fare refunds and cancellation fees may be assessed based on the length of your cruise and how many days prior to your cruise departure date that Princess Cruises is notified of your cancellation. Visit [princess.com](http://princess.com) for specific details. For a great option for protecting your vacation, refer to the Princess Vacation Protection information pamphlet on [princess.com](http://princess.com) or contact your travel agent for more details.

For additional questions please contact your travel agent or visit [princess.com](http://princess.com)

If there's an ocean, Princess can take you there



Alaska



Asia & Africa



Australia & New Zealand



Canada & New England



Caribbean, Mexico & Pacific Coast



Europe



Hawaii, Tahiti & South Pacific



Panama Canal



South America



World Cruises

**Book now!**



Your travel agent



1-800-PRINCESS



[www.princess.com](http://www.princess.com)



**PRINCESS CRUISES**

*escape completely®*

P.O. Box 947 Santa Clarita, CA 91380-9047



CANADIAN RESIDENTS: Fares are shown in U.S. dollars, and also available in Canadian dollars. Ask your agent or call Princess for details.

**YOUR PROFESSIONAL TRAVEL AGENT:**